

I6517010 VIRGILE

This luxurious plain-weave with a trellis and lattice pattern in covered yarn makes an excellent upholstery fabric.

I6517010 - Grigio blu 10



Laize : 146,00 cm / 57,48 inch

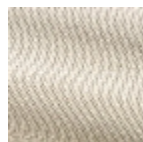
Fadini Borghi

PERFORMANCE	High Rub Test
TYPE	-
USE	Intensive use
MARTINDALE	35.000 T
COMPOSITION	58 % Cotton - 34 % Polyester - 8 % Polyamide
SALES UNIT	Available per meter/yard
WIDTH	146 cm / 57,48 inch
WEIGHT	803 gr / ml
CARE	

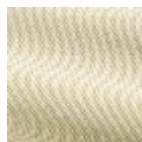
INFORMATION

Reinforced stitching recommended to avoid fraying at seams

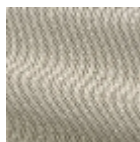
5 Colors



I6517001
Sabbia 01



I6517002
Vaniglia 02



I6517003
Duna 03



I6517004
Oro 04



I6517010
Grigio blu 10