

I6601003 TILDA

A plain texture with raised effects evoking raw stone.

I6601003 - Mordoré



Laize : 134,00 cm / 52,75 inch

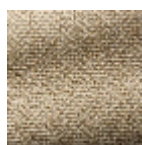
Fadini Borghi

PERFORMANCE	High Rub Test
TYPE	-
USE	Normal use
MARTINDALE	40.000 T
COMPOSITION	52 % Viscose - 27 % Polyester - 15 % Cotton - 6 % Linen
SALES UNIT	Available per meter/yard
WIDTH	134 cm / 52,75 inch
REPEAT	Free match
WEIGHT	884 gr / ml
CARE	
CERTIFICATIONS	BS5852 Cigarette & match test NFPA 260-Class 1
NOTES	Woven in Pierre Frey's workshop in northern France. Living Heritage Mill.
INFORMATION	Irregular weaving

8 Colors



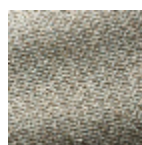
I6601001
Silver



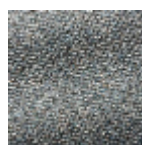
I6601002
Gold



I6601003
Mordoré



I6601004
Opaline



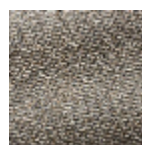
I6601005
Saphir



I6601006
Emeraude



I6601007
Nymphe



I6601009
Graphite