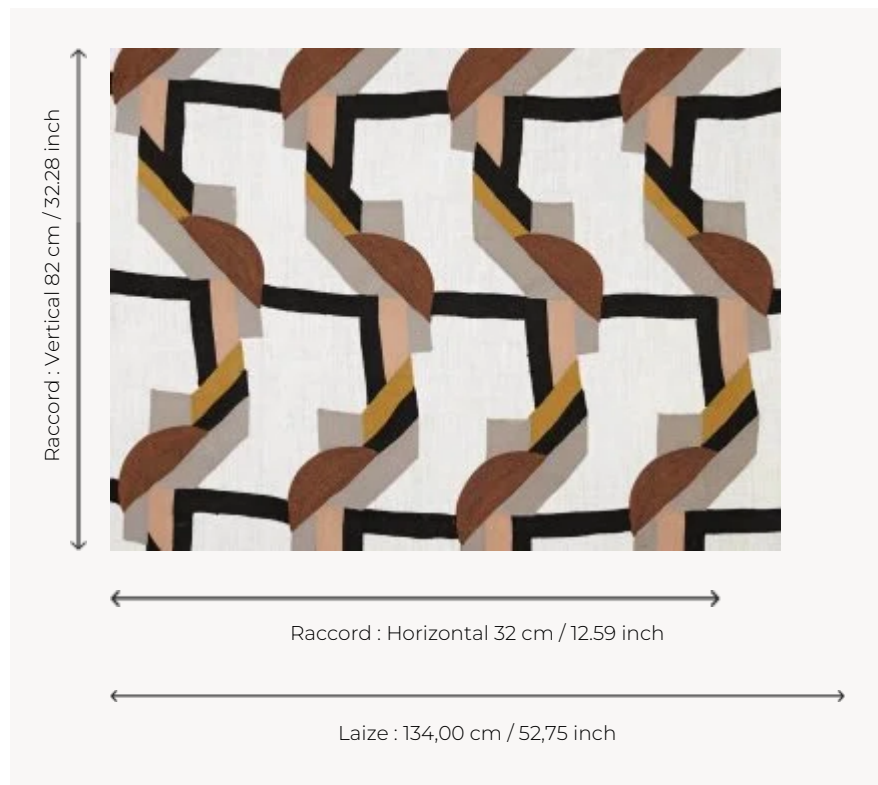


I6607001 COSMA

These precious matte geometric embroidery shapes intertwine, complement and confront one another. Matte hand embroidered threads harmonize across a beautiful linen canvas.

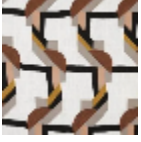
I6607001 - Argento oro



Fadini Borghi

TYPE	Embroideries
USE	Curtain
COMPOSITION	75 % Linen - 15 % Acrylic - 10 % metallised yarn Lurex
SALES UNIT	Available per meter/yard
WIDTH	134 cm / 52,75 inch
REPEAT	H: 32 cm - 12,59 inch V: 82 cm - 32,28 inch Straight repeat
WEIGHT	777 gr / ml
CARE	
NOTES	Handcrafted embroidery

1 Colors



I6607001

Argento oro