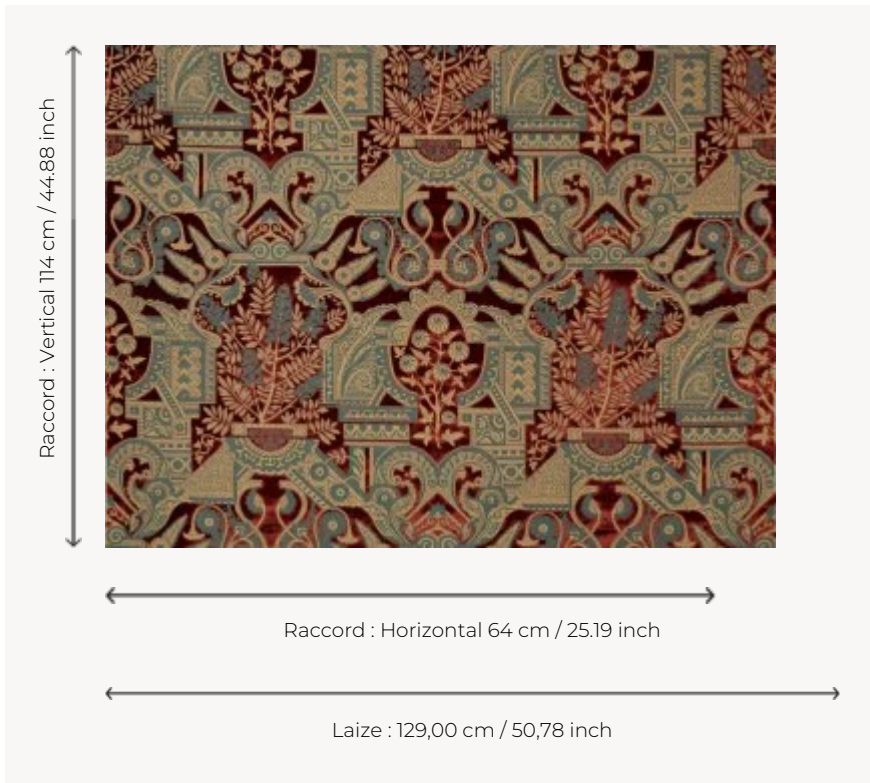


## I6613002 SYLVANA

With its sublime Genoa velvet that evokes a 17th century Persian garden, SYLVANA depicts earthly paradise with its delicately woven flowers. This fabric is freely inspired by a 19th century gouache painting in the Orientalized style that was fashionable at the time, which is preserved in the Maison's collection of archives.

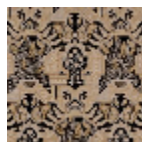
### I6613002 - Rosso



### Fadini Borghi

<b>TYPE</b>	-
<b>USE</b>	Moderate use
<b>MARTINDALE</b>	< 10.000 T
<b>COMPOSITION</b>	71 % Cotton - 29 % Cupro
<b>SALES UNIT</b>	Available per meter/yard
<b>WIDTH</b>	129 cm / 50,78 inch
<b>REPEAT</b>	H: 64 cm - 25,19 inch V: 114 cm - 44,88 inch Straight repeat
<b>WEIGHT</b>	412 gr / ml
<b>CARE</b>	
<b>INFORMATION</b>	pile 100% bemberg

## 2 Colors



16613001  
Nero



16613002  
Rosso