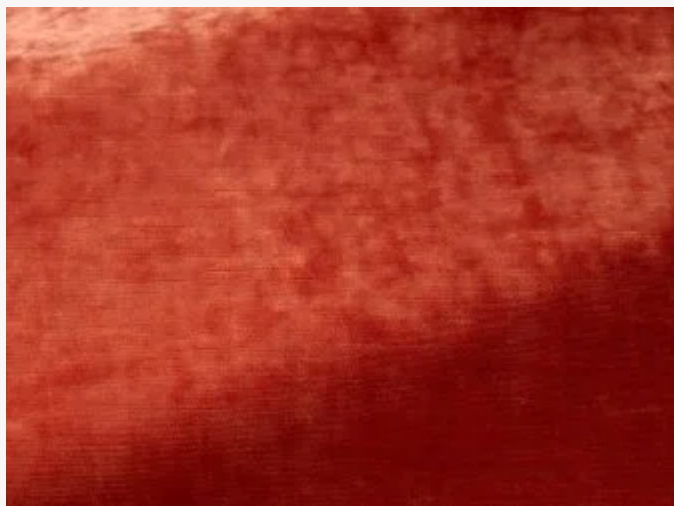


I6615012 CAPRI II

A superb fireproof velvet, CAPRI II is available in an appealing range of warm colors.

I6615012 - Albicocca



Laize : 141,00 cm / 55,51 inch

Fadini Borghi

TYPE	-
USE	Intensive use
MARTINDALE	>100.000 T
COMPOSITION	100 % Polyester Fire Retardant
SALES UNIT	Available per meter/yard
WIDTH	141 cm / 55,51 inch
WEIGHT	634 gr / ml
CARE	

CERTIFICATIONS	NFPA 701-Pass EN1021-1-2 BS5852 Cigarette & match test Fire retardant M1 CLASSE UNO BS5867 Curtain NFPA 260-Class 1 CAL TB 117- Pass CRIB 5
-----------------------	---

NOTES	Can be embossed Flame retardant
--------------	------------------------------------

BOOK	I9979202001MINI I9979202001
-------------	--------------------------------

26 Colors



16615001
Neve



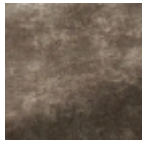
16615002
Perla



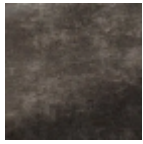
16615003
Tortora



16615004
Pepe



16615005
Delfino



16615006
Tempesta



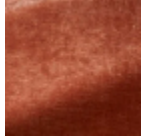
16615007
Cappuccino



16615008
Avana



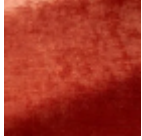
16615009
Senape



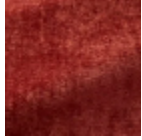
16615010
Pesca



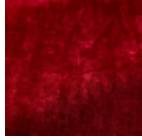
16615011
Rosa



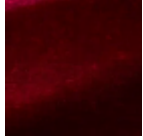
16615012
Albicocca



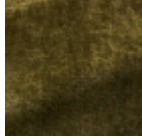
16615013
Granata



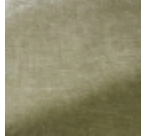
16615014
Ciliegia



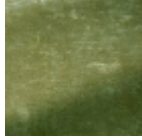
16615015
Lampone



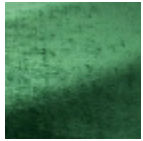
16615016
Felce



16615017
Giada



16615018
Oliva



16615019
Smeraldo



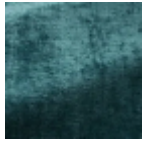
16615020
Celadon



16615021
Fontana



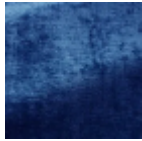
16615022
Nattier



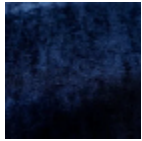
16615023
Anatra



16615024
Zaffiro



16615025
Marinaio



16615026
Indaco