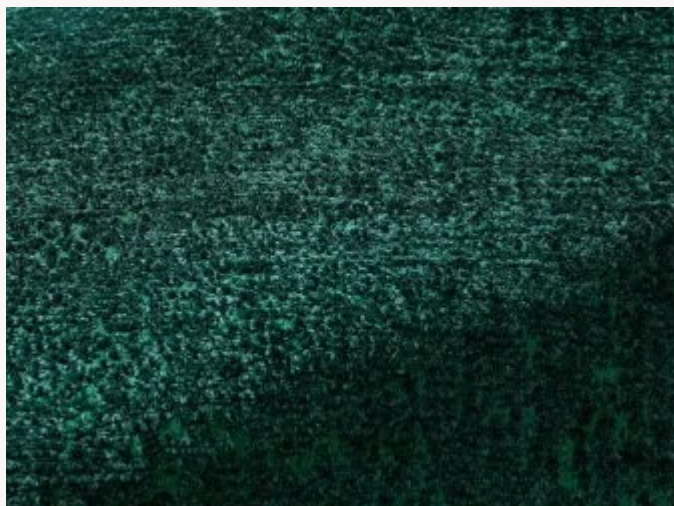


# I6622012 FREDDO


Chenille velvet with a soft look and a soft touch, it is ideal for use on seating.

## I6622012 - Anatra



Laize : 140,00 cm / 55,11 inch

## Fadini Borghi

<b>PERFORMANCE</b>	High Rub Test
<b>TYPE</b>	-
<b>USE</b>	Intensive use
<b>MARTINDALE</b>	70.000 T
<b>COMPOSITION</b>	90 % Polyester - 10 % Cotton
<b>SALES UNIT</b>	Available per meter/yard
<b>WIDTH</b>	140 cm / 55,11 inch
<b>WEIGHT</b>	1078 gr / ml
<b>CARE</b>	
<b>CERTIFICATIONS</b>	NFPA 260-Class 1 CAL TB 117- Pass
<b>INFORMATION</b>	Patina with use
<b>BOOK</b>	I9979202004

# 14 Colors



I6622001  
Perla



I6622002  
Duna



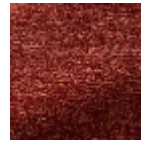
I6622003  
Orzo



I6622004  
Ciottolo



I6622005  
Pesca



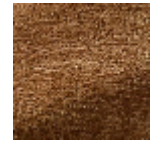
I6622006  
Terracotta



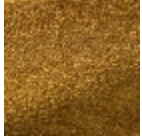
I6622007  
Mirtillo



I6622008  
Corteccia



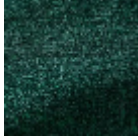
I6622009  
Castagno



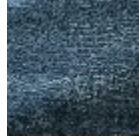
I6622010  
Ambra



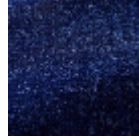
I6622011  
Antica



I6622012  
Anatra



I6622013  
Tempesta



I6622014  
Marina