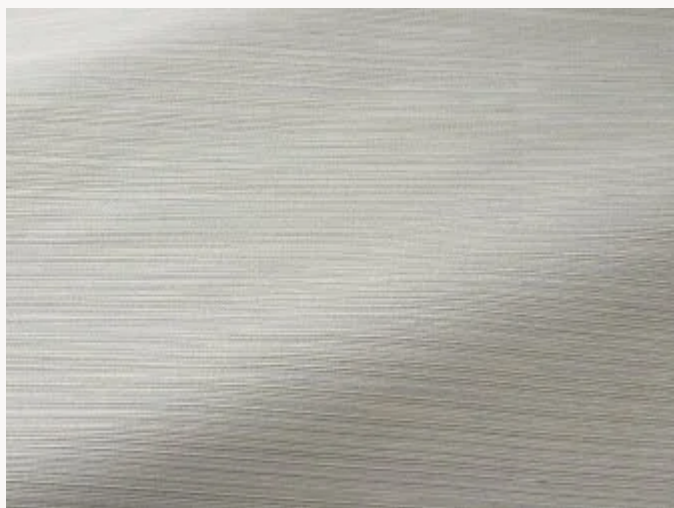




# I6623001 PEPA

With its beautiful, subtly iridescent monotone tones, PEPA is just as stunning when used for curtains as for seating.

## I6623001 - Madreperla

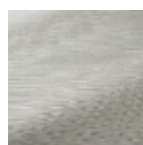


Laize : 140,00 cm / 55,11 inch

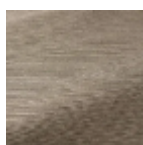
## Fadini Borghi

<b>PERFORMANCE</b>	High Rub Test
<b>TYPE</b>	-
<b>USE</b>	Intensive use
<b>MARTINDALE</b>	70.000 T
<b>COMPOSITION</b>	44 % Cotton - 19 % Polyamide - 18 % Viscose - 13 % Acetate
<b>SALES UNIT</b>	Available per meter/yard
<b>WIDTH</b>	140 cm / 55,11 inch
<b>WEIGHT</b>	476 gr / ml
<b>CARE</b>	
<b>CERTIFICATIONS</b>	NFPA 260-Class 1
<b>NOTES</b>	Reversible
<b>INFORMATION</b>	Stripes perpendicular to selvages Reinforced stitching recommended to avoid fraying at seams
<b>BOOK</b>	I9979202005

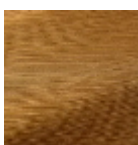
## 7 Colors



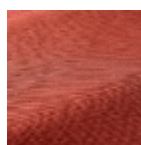
I6623001  
Madreperla



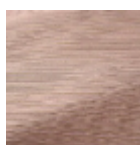
I6623002  
Duna



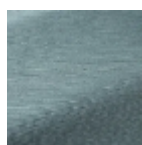
I6623004  
Ambra



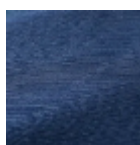
I6623005  
Corallo



I6623007  
Ballerina



I6623014  
Acqua



I6623016  
Lapislazzuli