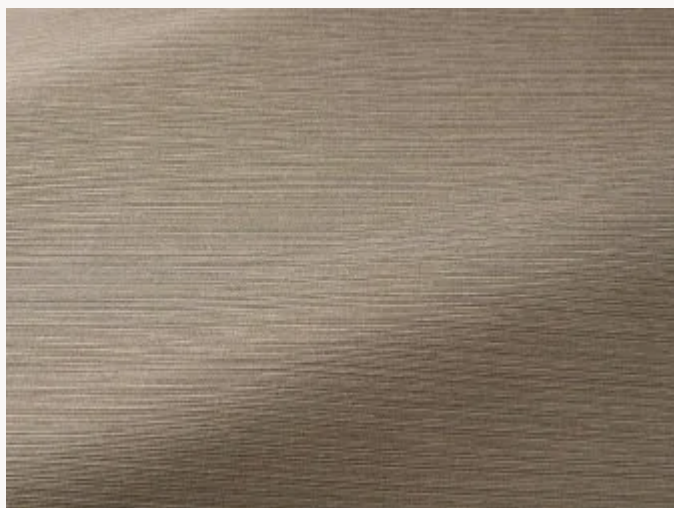


I6623002 PEPA

With its beautiful, subtly iridescent monotone tones, PEPA is just as stunning when used for curtains as for seating.

I6623002 - Duna

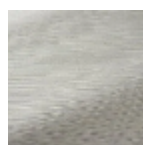


Laize : 140,00 cm / 55,11 inch

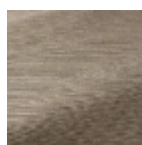
Fadini Borghi

PERFORMANCE	High Rub Test
TYPE	-
USE	Intensive use
MARTINDALE	70.000 T
COMPOSITION	44 % Cotton - 19 % Polyamide - 18 % Viscose - 13 % Acetate
SALES UNIT	Available per meter/yard
WIDTH	140 cm / 55,11 inch
WEIGHT	476 gr / ml
CARE	
CERTIFICATIONS	NFPA 260-Class 1
NOTES	Reversible
INFORMATION	Stripes perpendicular to selvages Reinforced stitching recommended to avoid fraying at seams
BOOK	I9979202005

7 Colors



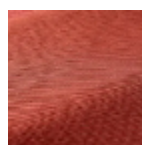
I6623001
Madreperla



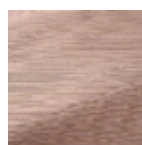
I6623002
Duna



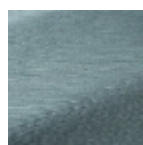
I6623004
Ambra



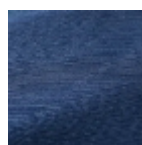
I6623005
Corallo



I6623007
Ballerina



I6623014
Acqua



I6623016
Lapislazzuli