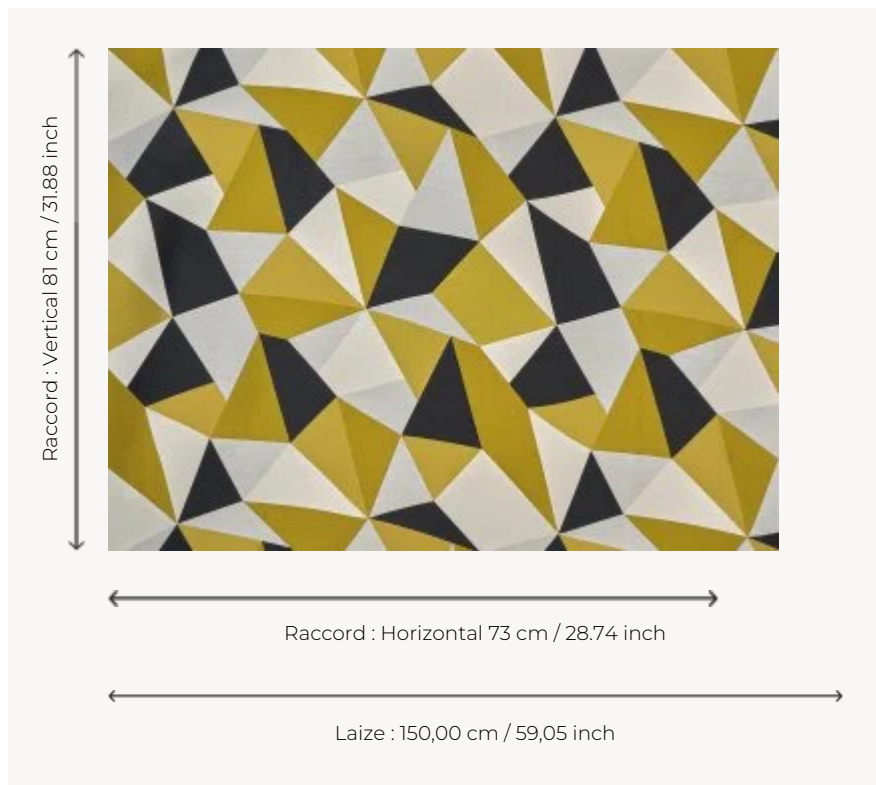


I6630002 ARLECCHINO

Superb and shimmering diamond weave inspired by the Harlequin costume of the Commedia de l'Arte.

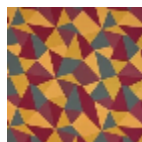
I6630002 - Quadrato



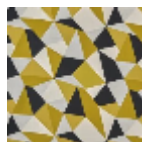
Fadini Borghi

TYPE	Silks & Silky effect fabrics
COMPOSITION	95 % Polyester - 5 % Cotton
SALES UNIT	Available per meter/yard
WIDTH	150 cm / 59,05 inch
REPEAT	H: 73 cm - 28,74 inch V: 81 cm - 31,88 inch Straight repeat
WEIGHT	420 gr / ml
CARE	

3 Colors



I6630001
Commedia



I6630002
Quadrato



I6630003
Onde