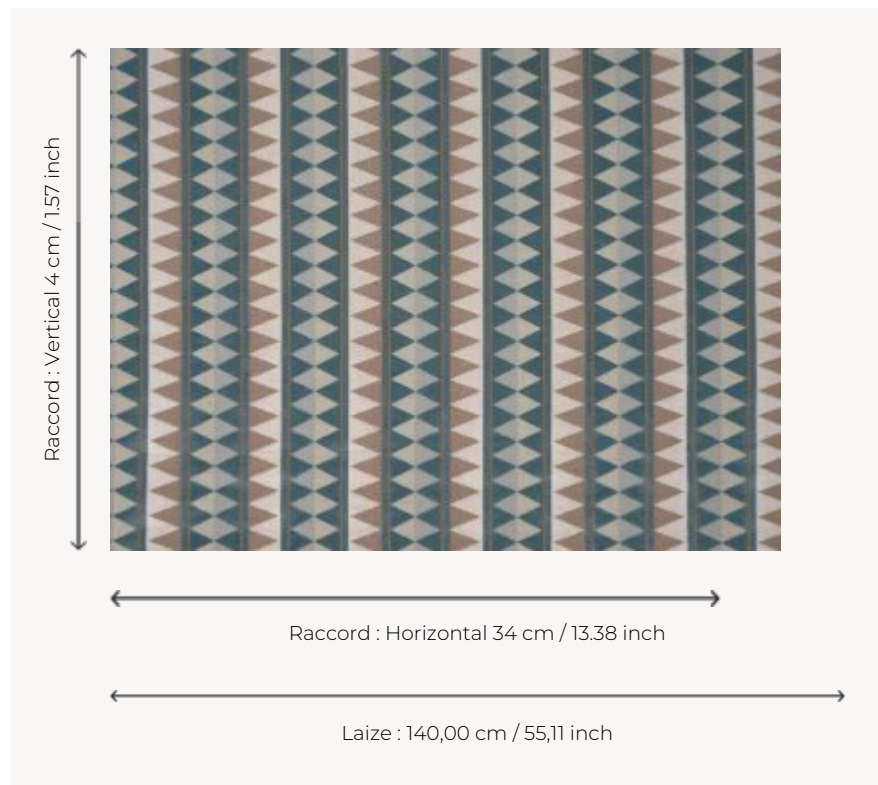


I6631001 AGOSTINO

Magnificent ciselé velvet drawing zigzags of triangles with silky reflections, in a balance of bright colors.

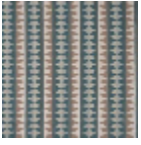
I6631001 - Fontana



Fadini Borghi

PERFORMANCE	High Rub Test
TYPE	-
USE	Normal use
MARTINDALE	>100.000 T
COMPOSITION	61 % Viscose - 39 % Cotton
SALES UNIT	Available per meter/yard
WIDTH	140 cm / 55,11 inch
REPEAT	H: 34 cm - 13,38 inch V: 4 cm - 1,57 inch Straight repeat
WEIGHT	770 gr / ml
CARE	
INFORMATION	pile 100% viscose Patina with use

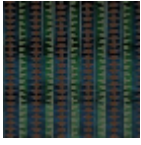
4 Colors



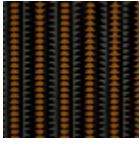
I6631001
Fontana



I6631002
Ambra



I6631003
agostino reale



I6631004
Sfumato