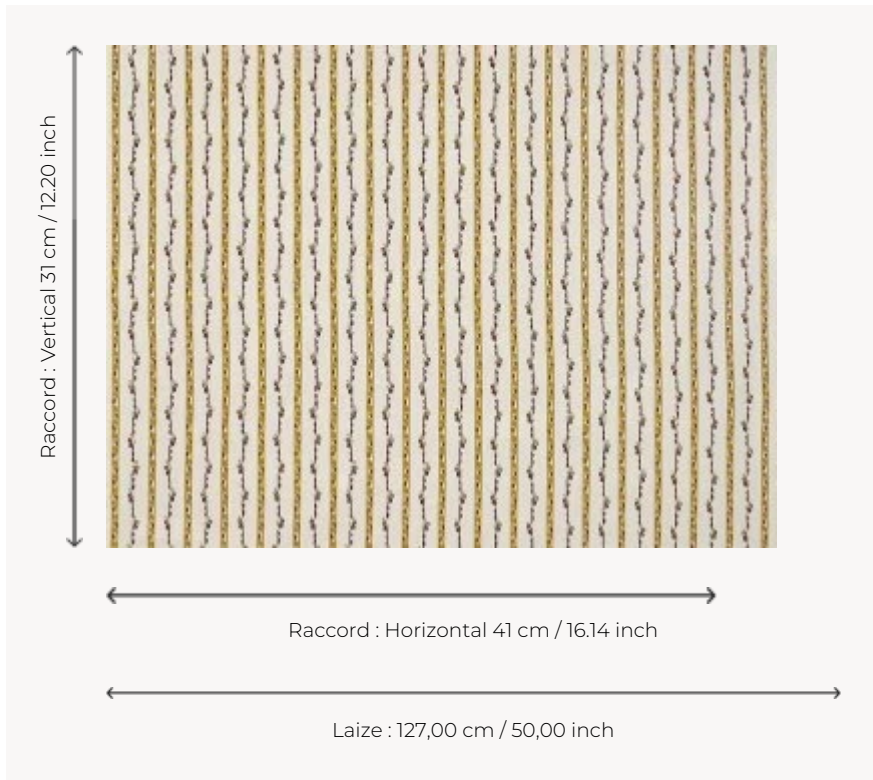


L1861010 MADAME ELISABETH

Named after the sister of Louis XVI, this document evokes the chiné à la branche method, which was in fashion at the end of the 18th century in both clothing and interior design. This technique consists of partially dyeing small groups of thread, called branches, before weaving. This technique is similar to ikat, but it produces typical European designs consisting of flowers and stripes. It was very popular in the 18th century and printing manufacturers were quick to reproduce these blurred-contour motifs through block printing. Available as a screen printed by hand wallpaper (LP106).

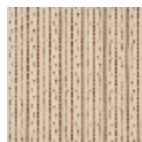
L1861010 - Tournesol



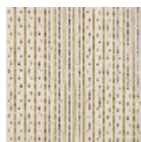
Le manach

TYPE	Prints
COMPOSITION	100 % Cotton
SALES UNIT	Available per meter/yard
WIDTH	127 cm / 50,00 inch
REPEAT	H: 41 cm - 16,14 inch V: 31 cm - 12,20 inch Straight repeat
WEIGHT	172 gr / ml
CARE	
NOTES	Made in France (EPV Living Heritage Mill)
INFORMATION	Percalé base Hand screen printed

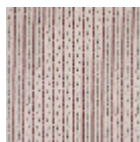
4 Colors



L1861001
Brun



L1861010
Tournesol



L1861011
Garance



L1861012
Indigo