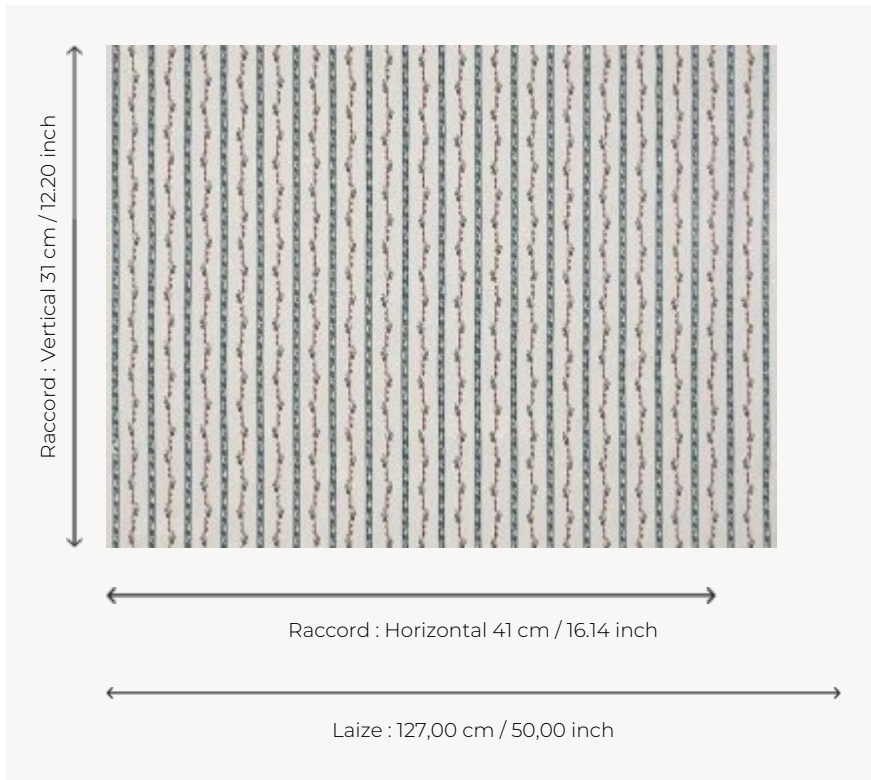


## L1861012 MADAME ELISABETH

Named after the sister of Louis XVI, this document evokes the chiné à la branche method, which was in fashion at the end of the 18th century in both clothing and interior design. This technique consists of partially dyeing small groups of thread, called branches, before weaving. This technique is similar to ikat, but it produces typical European designs consisting of flowers and stripes. It was very popular in the 18th century and printing manufacturers were quick to reproduce these blurred-contour motifs through block printing. Available as a screen printed by hand wallpaper (LP106).

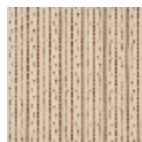
### L1861012 - Indigo



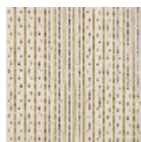
### Le manach

<b>TYPE</b>	Prints
<b>COMPOSITION</b>	100 % Cotton
<b>SALES UNIT</b>	Available per meter/yard
<b>WIDTH</b>	127 cm / 50,00 inch
<b>REPEAT</b>	H: 41 cm - 16,14 inch V: 31 cm - 12,20 inch Straight repeat
<b>WEIGHT</b>	172 gr / ml
<b>CARE</b>	
<b>NOTES</b>	Made in France (EPV Living Heritage Mill)
<b>INFORMATION</b>	Percalé base Hand screen printed

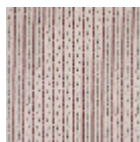
## 4 Colors



L1861001  
Brun



L1861010  
Tournesol



L1861011  
Garance



L1861012  
Indigo