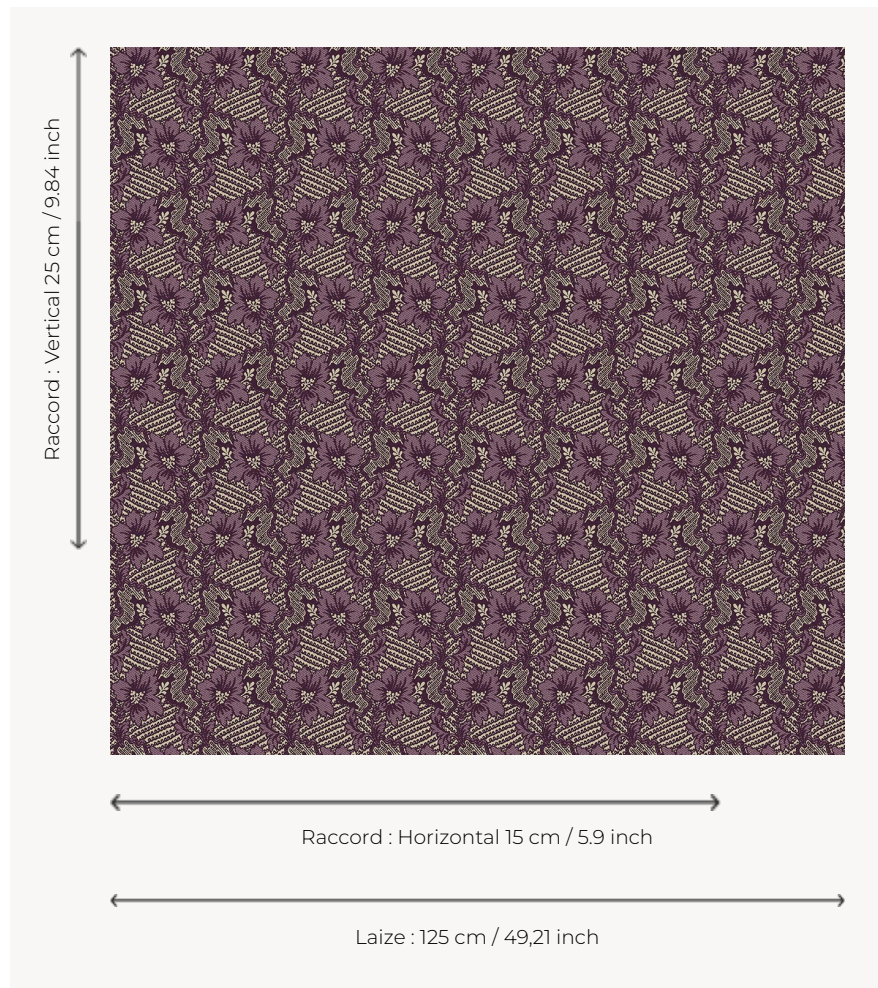


## L2121\_CHARDIN\_B65\_B31\_FE CHARDIN

Characteristic pattern of the Louis XV style with lace effects emphasizing opulent stylized flowers.

### L2121\_CHARDIN\_B65\_B31\_FE -



### Le manach

<b>TYPE</b>	Toiles de Tours
<b>DESIGN STRUCTURE</b>	2 Colors, 1 Ground
<b>RECOMMENDED YARNS</b>	Nacré Chenille Bouclette
<b>SPLIT YARNS</b>	Yes
<b>SALES UNIT</b>	Available per meter
<b>WIDTH</b>	125 cm env. / approx 49,21 inch
<b>REPEAT</b>	H: 15 cm env. - approx 5,90 inch V: 25 cm env. - approx 9,84 inch Straight repeat

#### CARE



#### NOTES

Woven in Pierre Frey's workshop in northern France. Living Heritage Mill.

## 2 Colors



L2121\_CHARDI  
N\_B21\_B39\_FE



L2121\_CHARDI  
N\_B65\_B31\_FE