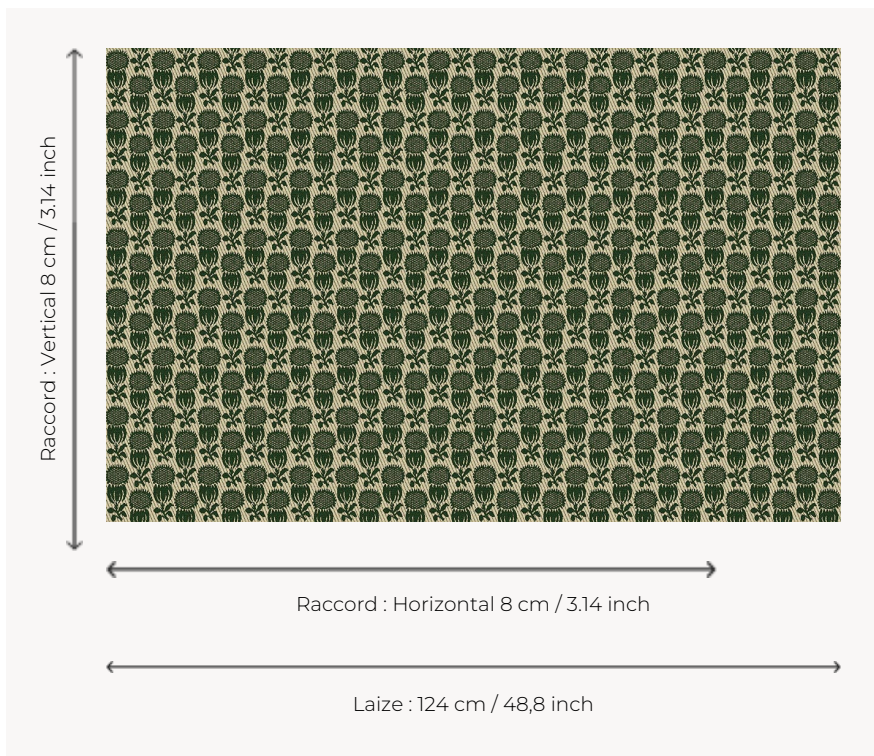


L2407_LES_CHARDONS_C511_FE_VERSO LES CHARDONS

Emblem of Scotland, symbol of virtue, the thistle is here treated in a composition that recalls those of the Louis XVI period.

L2407_LES_CHARDONS_C511_FE_Verso -



Le manach

TYPE	Toiles de Tours
DESIGN STRUCTURE	1 Color, 1 Ground
RECOMMENDED YARNS	Nacré Chenille Bouclette
SPLIT YARNS	Yes
REVERSIBLE	Yes
SALES UNIT	Available per meter
WIDTH	124 cm env. / approx 48,80 inch
REPEAT	H: 8 cm env. - approx 3,14 inch V: 8 cm env. - approx 3,14 inch Straight repeat
CARE	
NOTES	Woven in Pierre Frey's workshop in northern France. Living Heritage Mill.

8 Colors



L2407_LES_CH
ARDONS_B65_
B39_FE



L2407_LES_CH
ARDONS_B65_
B39_FE_Verso



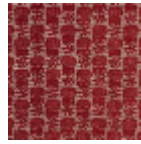
L2407_LES_CH
ARDONS_C511_
FE



L2407_LES_CH
ARDONS_C511_
FE_Verso



L2407_LES_CH
ARDONS_C519
_FM



L2407_LES_CH
ARDONS_C519
_FM_Verso



L2407_LES_CH
ARDONS_N314
3_FE



L2407_LES_CH
ARDONS_N314
3_FE_Verso