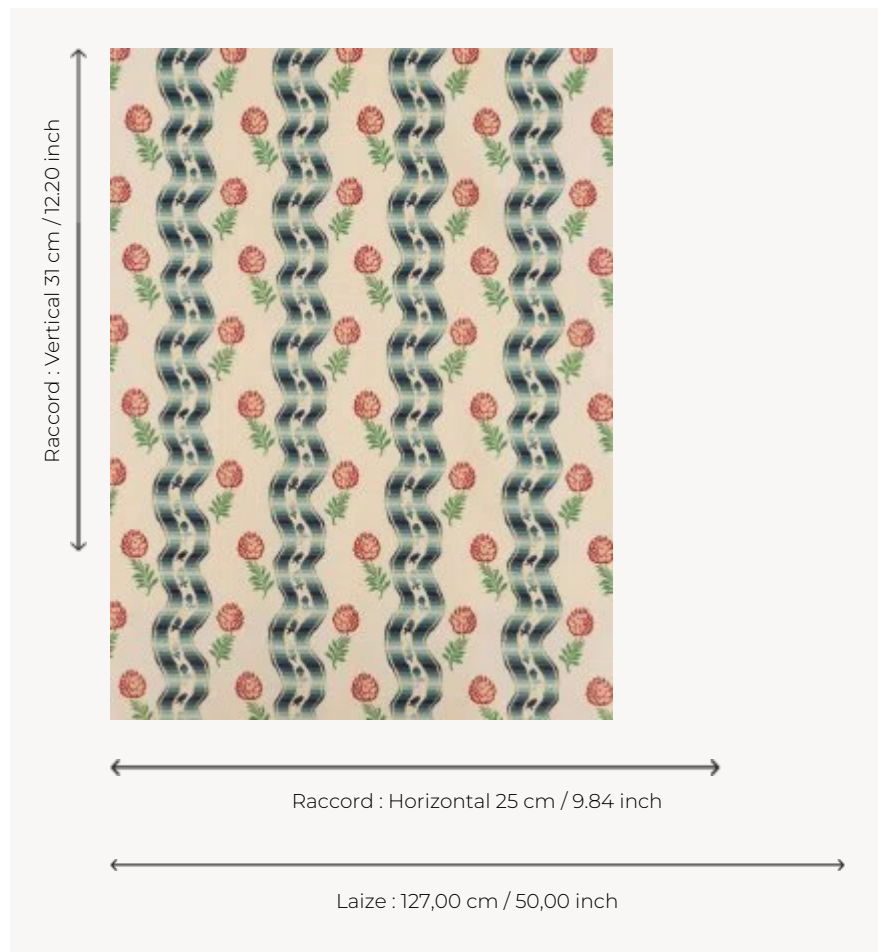


## L2454003 POMMES DE PIN

The motif of this fabrics reproduces a Valoise from the start of the 18th century. This one was mentioned in corporate by-laws from 1669 and is made of a very fine silk cloth fabric that was in fashion in the late 17th and early 18th centuries. Having an extraordinary sheen, it is embellished with various motifs, flowers in particular. This document was used many times by Le Manach, which first reproduced it in lampas before making it into one of the emblematic prints of its collection.

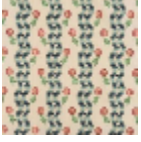
### L2454003 - Creme



### Le manach

<b>TYPE</b>	Prints
<b>COMPOSITION</b>	68 % Linen - 32 % Cotton
<b>SALES UNIT</b>	Available per meter/yard
<b>WIDTH</b>	127 cm / 50,00 inch
<b>REPEAT</b>	H: 25 cm - 9,84 inch V: 31 cm - 12,20 inch
<b>WEIGHT</b>	353 gr / ml
<b>CARE</b>	
<b>NOTES</b>	Made in France (EPV Living Heritage Mill)
<b>INFORMATION</b>	Hand screen printed

# 1 Colors



L2454003  
Creme