

## L2804001 MIKADO

MIKADO, one of the House's emblematic prints, is loosely based on the fabric design called 'Chinese Acrobats'. To create this design, which was printed in the Senn Bidermann & Cie factory in Wesserling in 1790, the designer used several works by Pillement.

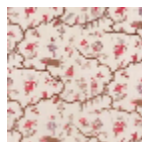
### L2804001 - Rouge



### Le manach

<b>TYPE</b>	Prints
<b>COMPOSITION</b>	100 % Cotton
<b>SALES UNIT</b>	Available per meter/yard
<b>WIDTH</b>	161 cm / 63,38 inch
<b>REPEAT</b>	H: 160 cm - 62,99 inch V: 69 cm - 27,16 inch Half drop repeat
<b>WEIGHT</b>	293 gr / ml
<b>CARE</b>	
<b>NOTES</b>	Woven in Pierre Frey's workshop in northern France. Living Heritage Mill.
<b>INFORMATION</b>	Hand screen printed

### 3 Colors



L2804001  
Rouge



L2804002  
Jaune



L2804003  
Bleu