

L2804002 MIKADO

MIKADO, one of the House's emblematic prints, is loosely based on the fabric design called 'Chinese Acrobats'. To create this design, which was printed in the Senn Bidermann & Cie factory in Wesserling in 1790, the designer used several works by Pillement.

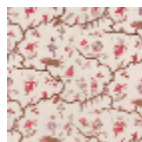
L2804002 - Jaune



Le manach

| | |
|--------------------|---|
| TYPE | Prints |
| COMPOSITION | 100 % Cotton |
| SALES UNIT | Available per meter/yard |
| WIDTH | 161 cm / 63,38 inch |
| REPEAT | H: 160 cm - 62,99 inch V: 69 cm - 27,16 inch Half drop repeat |
| WEIGHT | 293 gr / m ² |
| CARE | |
| NOTES | Woven in Pierre Frey's workshop in northern France. Living Heritage Mill. |
| INFORMATION | Hand screen printed |

3 Colors



L2804001
Rouge



L2804002
Jaune



L2804003
Bleu