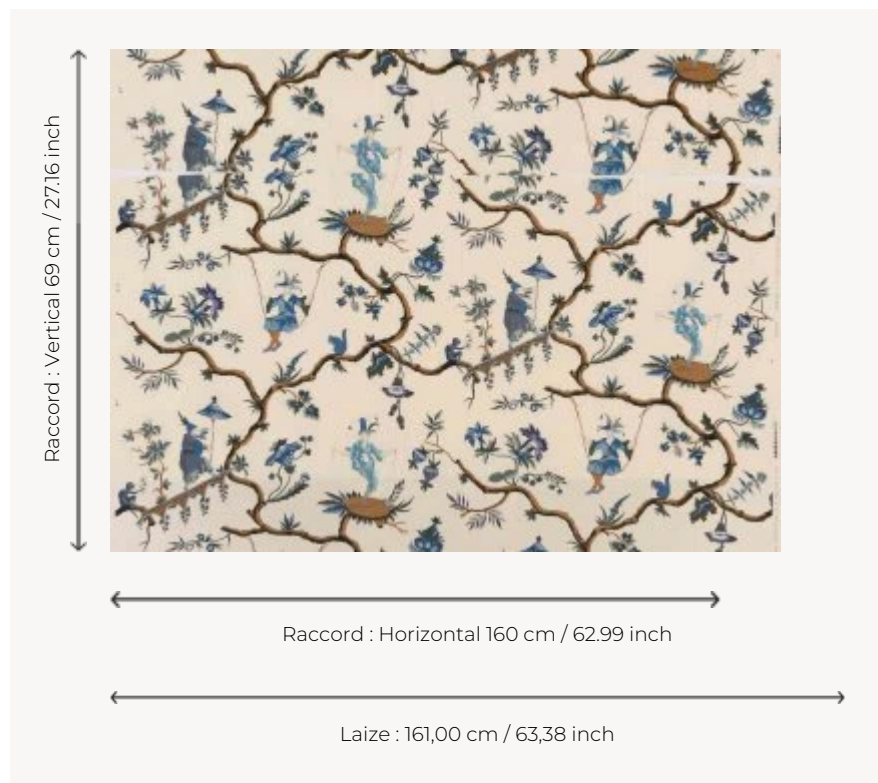


L2804003 MIKADO

MIKADO, one of the House's emblematic prints, is loosely based on the fabric design called 'Chinese Acrobats'. To create this design, which was printed in the Senn Bidermann & Cie factory in Wesserling in 1790, the designer used several works by Pillement.

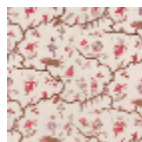
L2804003 - Bleu



Le manach

TYPE	Prints
COMPOSITION	100 % Cotton
SALES UNIT	Available per meter/yard
WIDTH	161 cm / 63,38 inch
REPEAT	H: 160 cm - 62,99 inch V: 69 cm - 27,16 inch Half drop repeat
WEIGHT	293 gr / ml
CARE	
NOTES	Woven in Pierre Frey's workshop in northern France. Living Heritage Mill.
INFORMATION	Hand screen printed

3 Colors



L2804001
Rouge



L2804002
Jaune



L2804003
Bleu