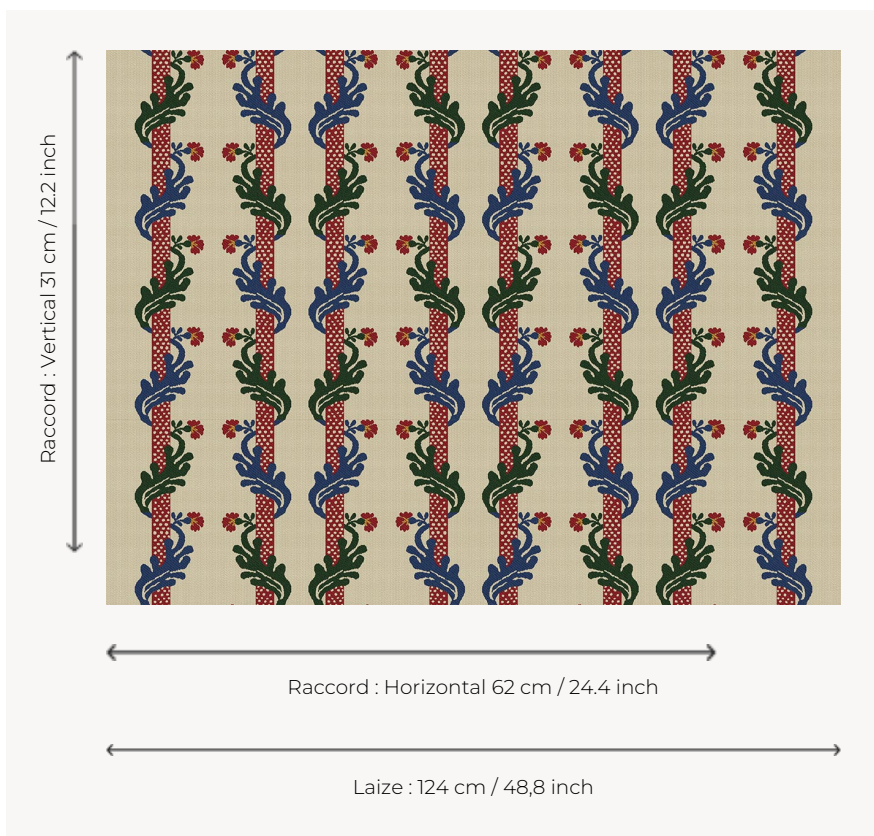


# L3101\_VICTOR\_HUGO\_BORDURES\_B88\_B24\_B23\_B70\_FG VICTOR HUGO BORDURES

Vertical stripes around which a foliated pattern is wrapped in the spirit of 17th century compositions.

## L3101\_VICTOR\_HUGO\_Bordures\_B88\_B24\_B23\_B70\_FG -



## Le manach

<b>TYPE</b>	Toiles de Tours
<b>DESIGN STRUCTURE</b>	4 Colors, 1 Ground
<b>RECOMMENDED YARNS</b>	Nacré Chenille Bouclette
<b>SALES UNIT</b>	Available per meter
<b>WIDTH</b>	124 cm env. / approx 48,80 inch
<b>REPEAT</b>	H: 62 cm env. - approx 24,40 inch V: 31 cm env. - approx 12,20 inch Straight repeat
<b>CARE</b>	
<b>NOTES</b>	Woven in Pierre Frey's workshop in northern France. Living Heritage Mill. Fabric coord: L3087 VICTOR HUGO Multicolore

## 5 Colors



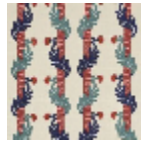
L3101\_VICTOR\_  
HUGO\_Bordur  
es\_B02\_B22\_B  
23\_N3014\_FG



L3101\_VICTOR\_  
HUGO\_Bordur  
es\_B02\_B93\_B  
46\_B58\_FI



L3101\_VICTOR\_  
HUGO\_Bordur  
es\_B88\_B24\_B  
23\_B70\_FG



L3101\_VICTOR\_  
HUGO\_Bordur  
es\_C520\_C535\_  
C531\_C516\_FE



L3101\_VICTOR\_  
HUGO\_Bordur  
es\_N3015\_N301  
6\_N3011\_N3010  
\_FE