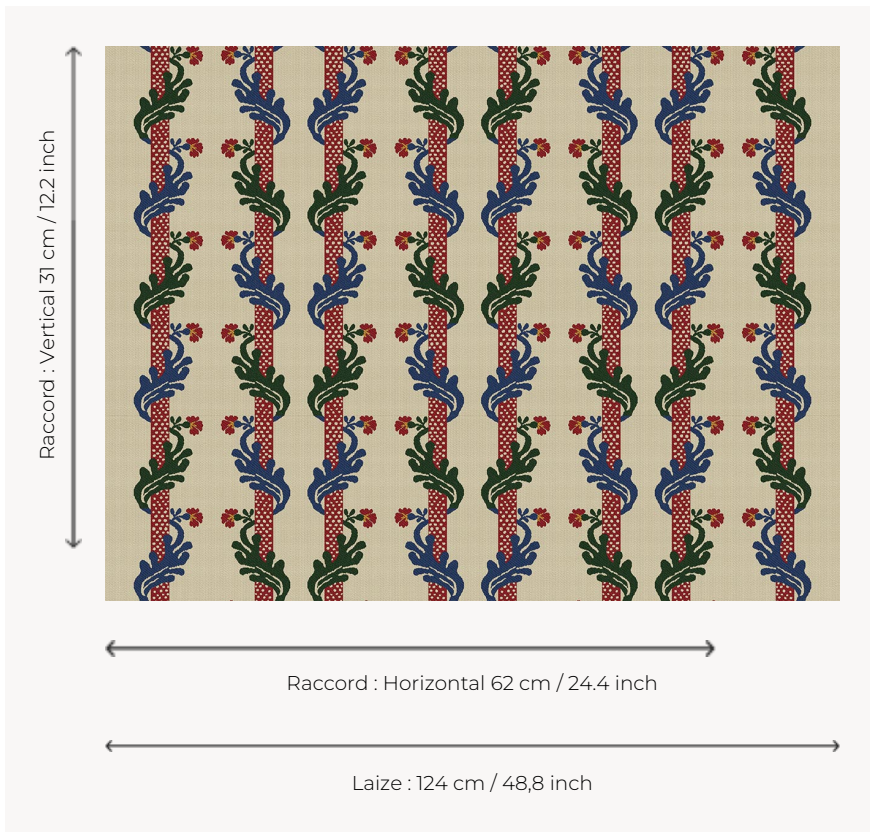


L3101_VICTOR_HUGO_BORDURES_N3015_N3016_N3011_N3010_FE

VICTOR HUGO BORDURES

Vertical stripes around which a foliated pattern is wrapped in the spirit of 17th century compositions.

L3101_VICTOR_HUGO_Bordures_N3015_N3016_N3011_N3010_FE -



Le manach

TYPE	Toiles de Tours
DESIGN STRUCTURE	4 Colors, 1 Ground
RECOMMENDED YARNS	Nacré Chenille Bouclette
SALES UNIT	Available per meter
WIDTH	124 cm env. / approx 48,80 inch
REPEAT	H: 62 cm env. - approx 24,40 inch V: 31 cm env. - approx 12,20 inch Straight repeat
CARE	
NOTES	Woven in Pierre Frey's workshop in northern France. Living Heritage Mill. Fabric coord: L3087 VICTOR HUGO Multicolore

5 Colors



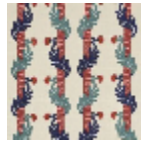
L3101_VICTOR_
HUGO_Bordur
es_B02_B22_B
23_N3014_FG



L3101_VICTOR_
HUGO_Bordur
es_B02_B93_B
46_B58_FI



L3101_VICTOR_
HUGO_Bordur
es_B88_B24_B
23_B70_FG



L3101_VICTOR_
HUGO_Bordur
es_C520_C535_
C531_C516_FE



L3101_VICTOR_
HUGO_Bordur
es_N3015_N301
6_N3011_N3010
_FE