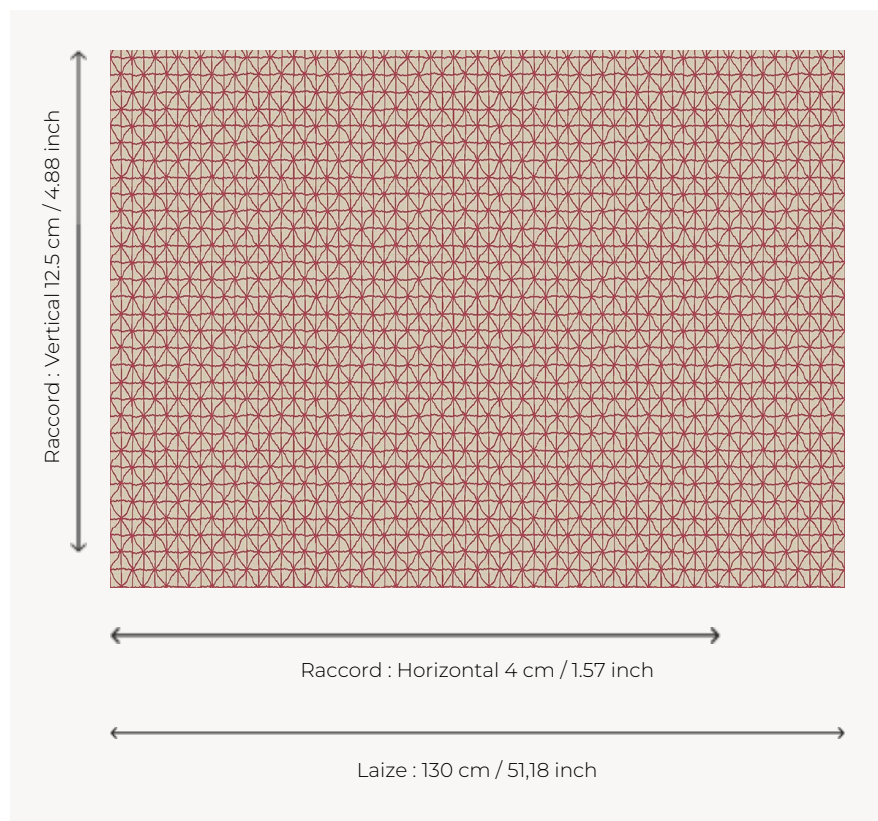


# L3294\_QUADRILLE\_N3010\_FE\_VERSO QUADRILLE

Small drawing characteristic of the modernist works of the 1930s.

## L3294\_QUADRILLE\_N3010\_FE\_VERSO -



## Le manach

<b>TYPE</b>	Toiles de Tours
<b>DESIGN STRUCTURE</b>	1 Color, 1 Ground
<b>RECOMMENDED YARNS</b>	Nacré Chenille Bouclette
<b>SPLIT YARNS</b>	Yes
<b>REVERSIBLE</b>	Yes
<b>SALES UNIT</b>	Available per meter
<b>WIDTH</b>	130 cm env. / approx 51,18 inch
<b>REPEAT</b>	H: 4 cm env. - approx 1,57 inch V: 12 cm env. - approx 4,88 inch Straight repeat

**CARE** 

**NOTES** Woven in Pierre Frey's workshop in northern France. Living Heritage Mill.

# 6 Colors



L3294\_QUADR  
ILLE\_B65\_FE



L3294\_QUADR  
ILLE\_B65\_FE\_V  
ERSO



L3294\_QUADR  
ILLE\_C517\_FG



L3294\_QUADR  
ILLE\_C517\_FG\_  
VERSO



L3294\_QUADR  
ILLE\_N3010\_FE



L3294\_QUADR  
ILLE\_N3010\_FE  
\_VERSO