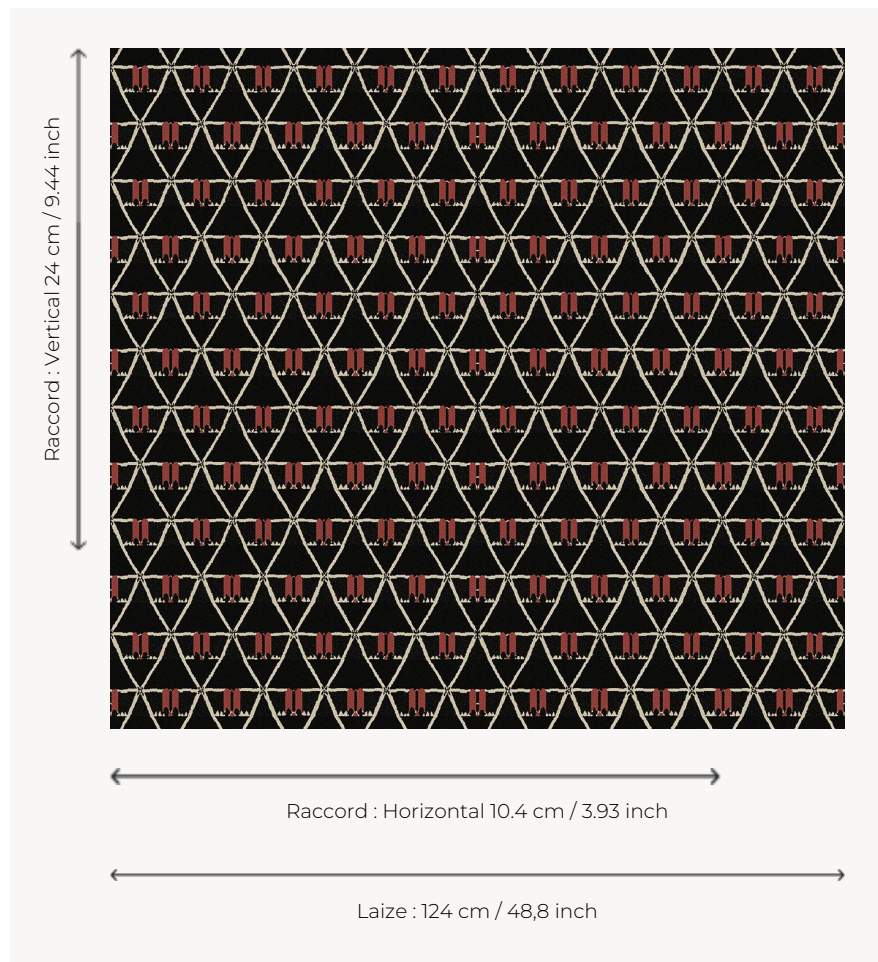


# L3475\_RANAVALO\_B54\_B84\_FE RANAVALO

This graphic design is reminiscent of the geometric compositions of Viennese artists grouped together in the Wiener Werkstatte at the beginning of the 20th century.

## L3475\_RANAVALO\_B54\_B84\_FE -



## Le manach

<b>TYPE</b>	Toiles de Tours
<b>DESIGN STRUCTURE</b>	2 Colors, 1 Ground
<b>RECOMMENDED YARNS</b>	Nacré Chenille Bouclette
<b>SPLIT YARNS</b>	Yes
<b>SALES UNIT</b>	Available per meter
<b>WIDTH</b>	124 cm env. / approx 48,80 inch
<b>REPEAT</b>	H: 10 cm env. - approx 3,93 inch V: 24 cm env. - approx 9,44 inch Straight repeat
<b>CARE</b>	
<b>NOTES</b>	Woven in Pierre Frey's workshop in northern France. Living Heritage Mill.

## 2 Colors



L3475\_RANAV  
ALO\_B54\_B84  
\_FE



L3475\_RANAV  
ALO\_N3002\_N  
3114\_FG