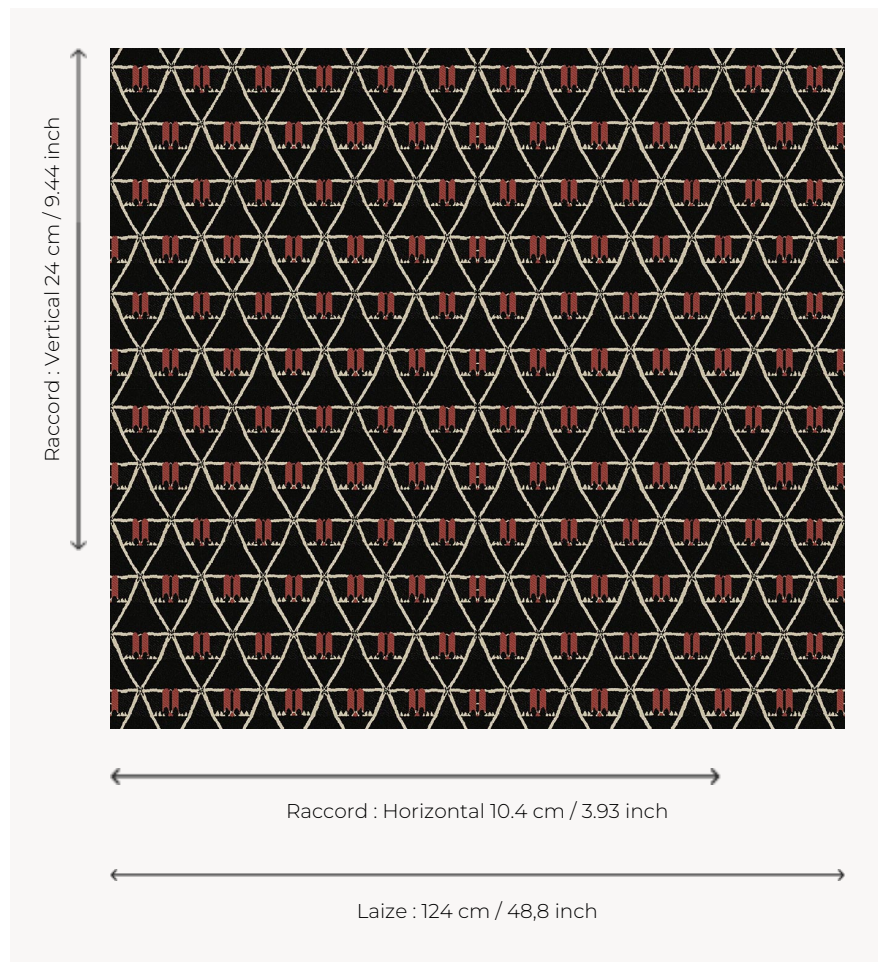


L3475_RANAVALO_N3002_N3114_FG RANAVALO

This graphic design is reminiscent of the geometric compositions of Viennese artists grouped together in the Wiener Werkstatte at the beginning of the 20th century.

L3475_RANAVALO_N3002_N3114_FG -



Le manach

TYPE	Toiles de Tours
DESIGN STRUCTURE	2 Colors, 1 Ground
RECOMMENDED YARNS	Nacré Chenille Bouclette
SPLIT YARNS	Yes
SALES UNIT	Available per meter
WIDTH	124 cm env. / approx 48,80 inch
REPEAT	H: 10 cm env. - approx 3,93 inch V: 24 cm env. - approx 9,44 inch Straight repeat
CARE	
NOTES	Woven in Pierre Frey's workshop in northern France. Living Heritage Mill.

2 Colors



L3475_RANAV
ALO_B54_B84
_FE



L3475_RANAV
ALO_N3002_N
3114_FG