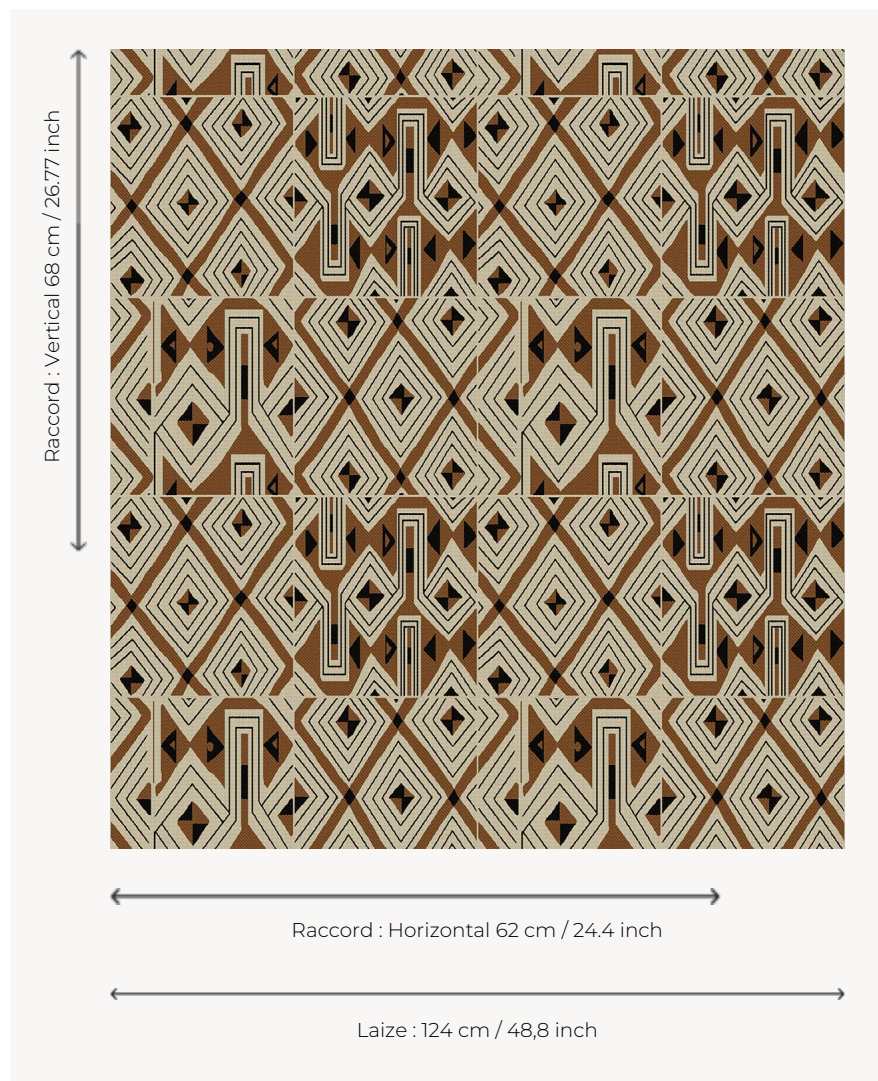


L3559_JAZZ_B54_B68_B92_B84_FE JAZZ

This is the very first Toile de Tours published by Le Manach in 1928. Of African influence, it shows the attraction that this continent exerts on the Europeans of the time. Josephine Baker, the photo reports of the Black Cruise, organized by Andre Citroen, in 1924 and 1925 and the exhibitions of African art contributed to this craze.

L3559_JAZZ_B54_B68_B92_B84_FE -



Le manach

TYPE	Toiles de Tours
DESIGN STRUCTURE	2 Colors, 1 Ground
RECOMMENDED YARNS	Nacré Chenille Bouclette
SPLIT YARNS	Yes
SALES UNIT	Available per meter
WIDTH	124 cm env. / approx 48,80 inch
REPEAT	H: 62 cm env. - approx 24,40 inch V: 68 cm env. - approx 26,77 inch Straight repeat
CARE	
NOTES	Woven in Pierre Frey's workshop in northern France. Living Heritage Mill.

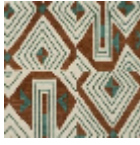
4 Colors



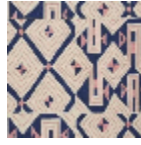
L3559_JAZZ_B
54_B68_B92_B
84_FE



L3559_JAZZ_B
69_B32_N3010
_FE



L3559_JAZZ_C
538_C512_C517
_FE



L3559_JAZZ_N
3108_N3011_FE