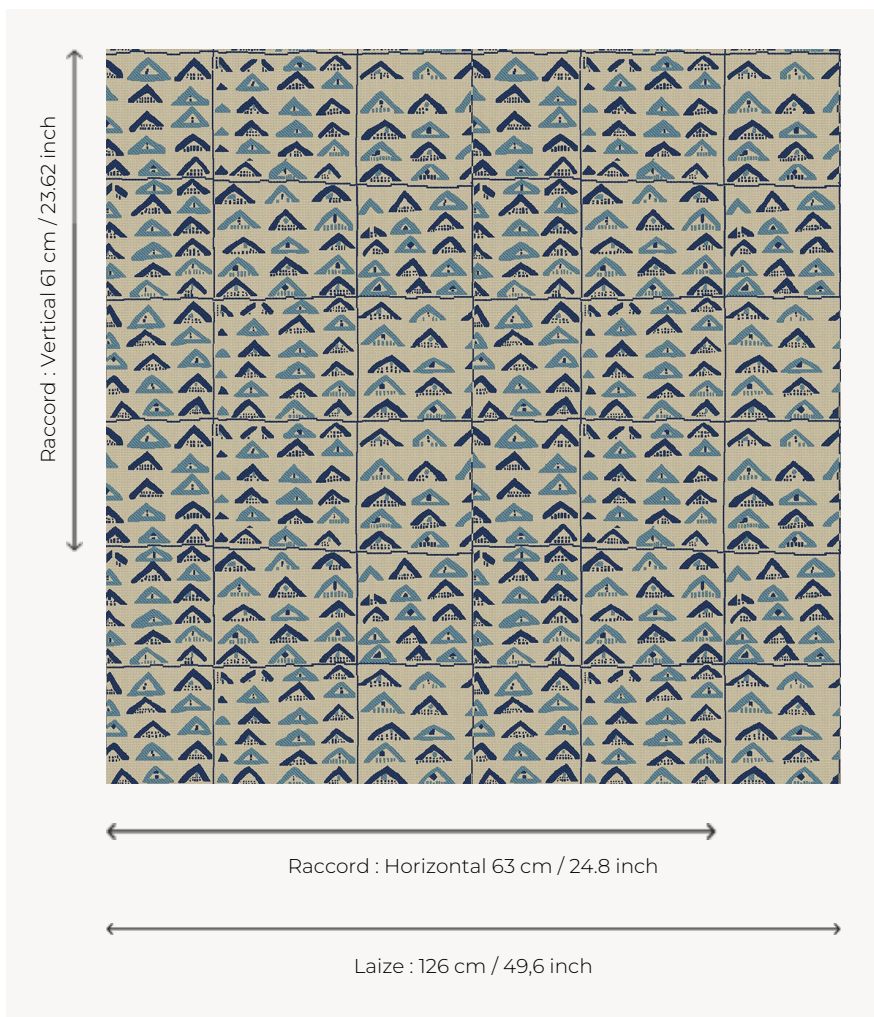


## L3566\_NIGER\_B02\_B92\_B93\_FE NIGER

African-inspired fabric edited by Le Manach for its first collection of toile Tours in 1928 reproducing Kuba velvets from Congo, so called because of the use of curly raffia yarns, distant echoes of Italian chiselled velvets.

### L3566\_NIGER\_B02\_B92\_B93\_FE -



### Le manach

<b>TYPE</b>	Toiles de Tours
<b>DESIGN STRUCTURE</b>	2 Colors, 1 Ground
<b>RECOMMENDED YARNS</b>	Nacré Chenille Bouclette
<b>SPLIT YARNS</b>	Yes
<b>SALES UNIT</b>	Available per meter
<b>WIDTH</b>	126 cm env. / approx 49,60 inch
<b>REPEAT</b>	H: 63 cm env. - approx 24,80 inch V: 61 cm env. - approx 23,62 inch Straight repeat
<b>CARE</b>	
<b>NOTES</b>	Woven in Pierre Frey's workshop in northern France. Living Heritage Mill.

# 1 Colors



L3566\_NIGER\_  
B02\_B92\_B93\_  
FE