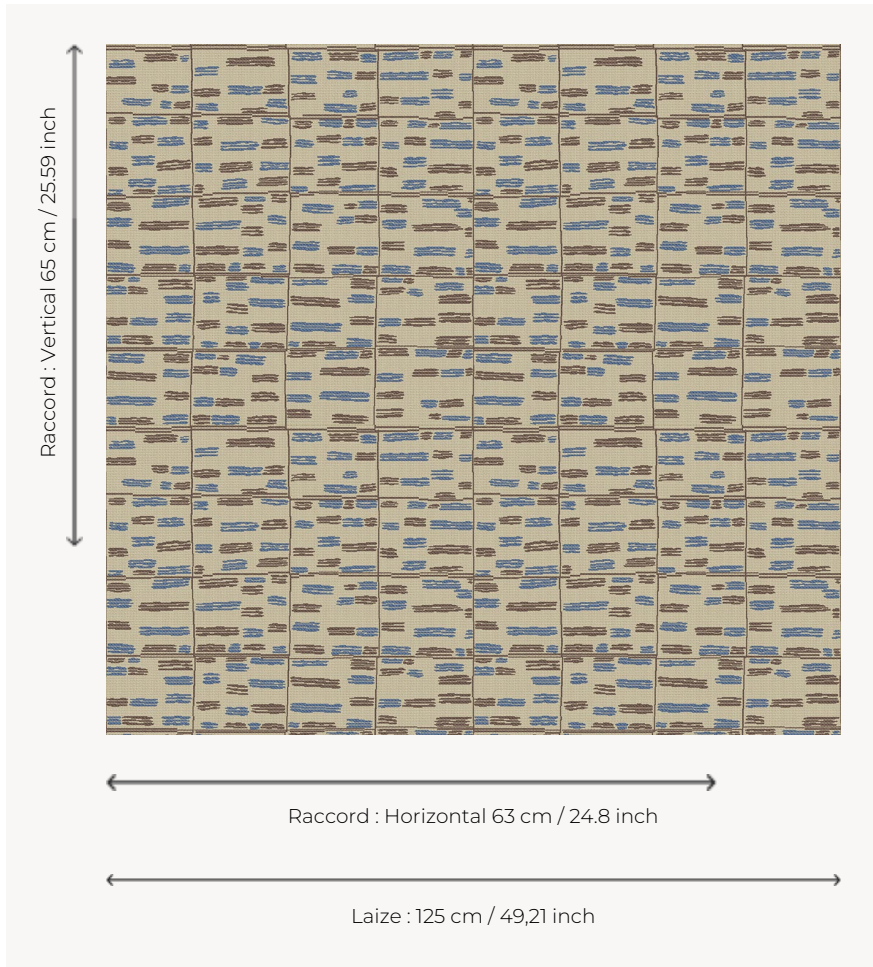



# L3568\_ATLANTIDE8C533\_C542\_FE ATLANTIDE

African-inspired fabric published by Le Manach for its first collection of Toile de Tours in 1928. René Prou used it on the liner Colombia in 1931. From then on, its success never wavered.

## L3568\_ATLANTIDE8C533\_C542\_FE -



## Le manach

<b>TYPE</b>	Toiles de Tours
<b>DESIGN STRUCTURE</b>	2 Colors, 1 Ground
<b>RECOMMENDED YARNS</b>	Nacré Chenille Bouclette
<b>SPLIT YARNS</b>	Yes
<b>SALES UNIT</b>	Available per meter
<b>WIDTH</b>	125 cm env. / approx 49,21 inch
<b>REPEAT</b>	H: 63 cm env. - approx 24,80 inch V: 65 cm env. - approx 25,59 inch Straight repeat
<b>CARE</b>	
<b>NOTES</b>	Woven in Pierre Frey's workshop in northern France. Living Heritage Mill.

# 3 Colors



L3568\_ATLANT  
IDE\_B90\_B30\_  
FE



L3568\_ATLANT  
IDE\_N3010\_N3  
117\_FE



L3568\_ATLANT  
IDE8C533\_C54  
2\_FE