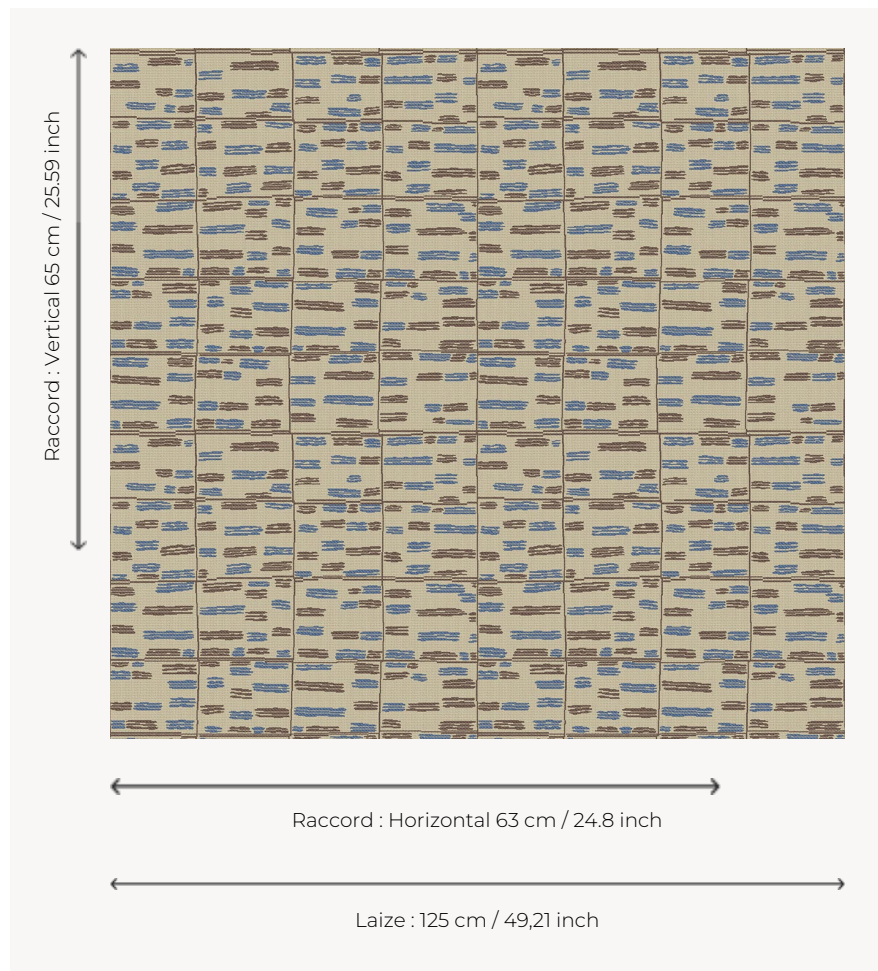



L3568_ATLANTIDE_N3010_N3117_FE ATLANTIDE

African-inspired fabric published by Le Manach for its first collection of Toile de Tours in 1928. René Prou used it on the liner Colombia in 1931. From then on, its success never wavered.

L3568_ATLANTIDE_N3010_N3117_FE -



Le manach

TYPE	Toiles de Tours
DESIGN STRUCTURE	2 Colors, 1 Ground
RECOMMENDED YARNS	Nacré Chenille Bouclette
SPLIT YARNS	Yes
SALES UNIT	Available per meter
WIDTH	125 cm env. / approx 49,21 inch
REPEAT	H: 63 cm env. - approx 24,80 inch V: 65 cm env. - approx 25,59 inch Straight repeat
CARE	
NOTES	Woven in Pierre Frey's workshop in northern France. Living Heritage Mill.

3 Colors



L3568_ATLANT
IDE_B90_B30_
FE



L3568_ATLANT
IDE_N3010_N3
117_FE



L3568_ATLANT
IDE8C533_C54
2_FE