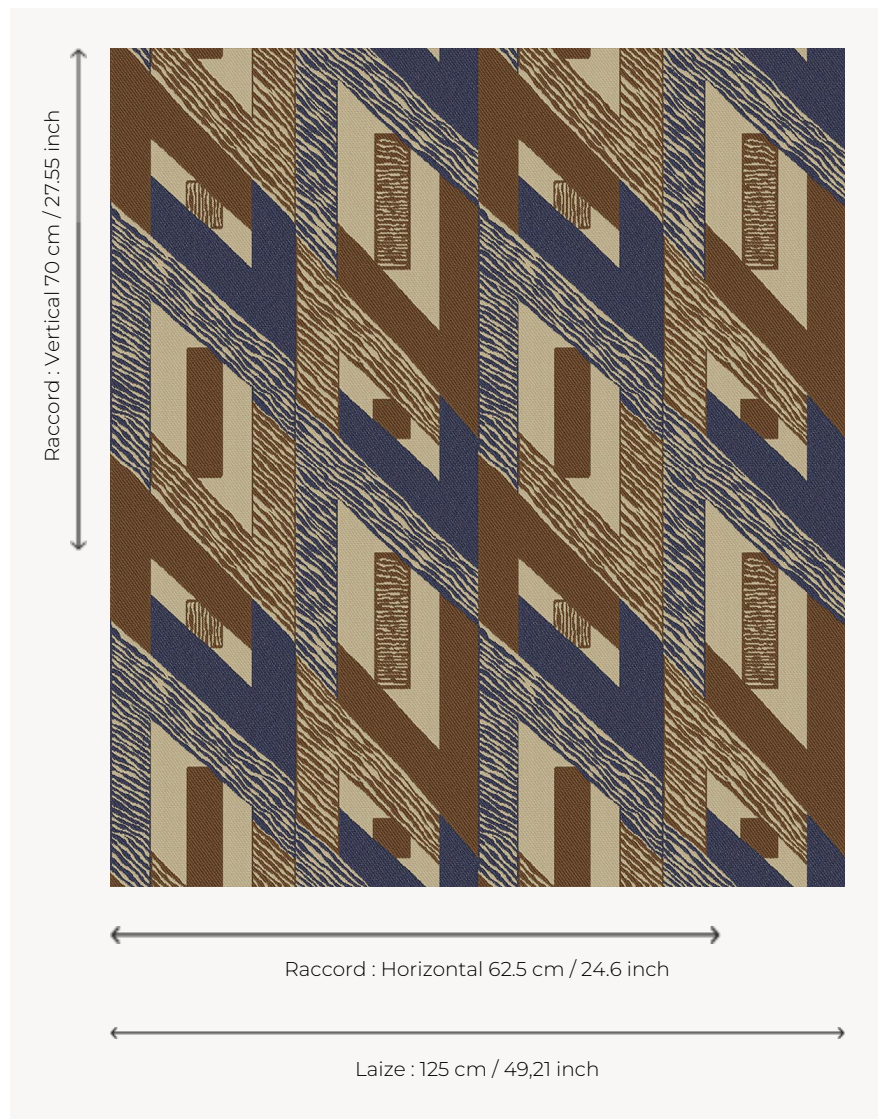


# L3569\_HYPERBOLE\_N3002\_N3010\_FE HYPERBOLE

Modernist inspiration for this geometric composition. Hyperbole is part of the first Toile de Tours collection published in 1928 by Le Manach.

## L3569\_HYPERBOLE\_N3002\_N3010\_FE -



## Le manach

<b>TYPE</b>	Toiles de Tours
<b>DESIGN STRUCTURE</b>	2 Colors, 1 Ground
<b>RECOMMENDED YARNS</b>	Nacré Chenille Bouclette
<b>SPLIT YARNS</b>	Yes
<b>SALES UNIT</b>	Available per meter
<b>WIDTH</b>	125 cm env. / approx 49,21 inch
<b>REPEAT</b>	H: 62 cm env. - approx 24,60 inch V: 70 cm env. - approx 27,55 inch Straight repeat
<b>CARE</b>	
<b>NOTES</b>	Woven in Pierre Frey's workshop in northern France. Living Heritage Mill.

# 5 Colors



L3569\_HYPER  
BOLE\_B09\_N3  
024\_FE



L3569\_HYPER  
BOLE\_C515\_C5  
12\_C511\_FE



L3569\_HYPER  
BOLE\_C515\_C5  
12\_FE



L3569\_HYPER  
BOLE\_N3002\_  
N3010\_FE



L3569\_HYPER  
BOLE\_N3013\_  
N3002\_FE