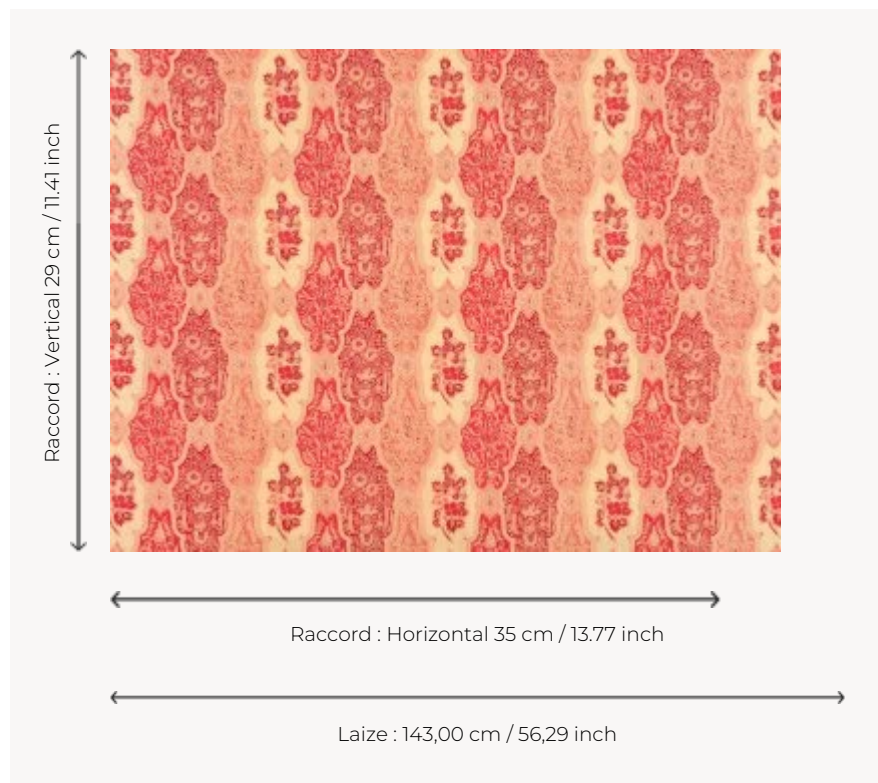



## L3673003 BATIK RAISIN

This print reproduces an early 20th century batik. Originally batiks were used almost exclusively for clothing and ceremonies. Batik is created using a tool known as a canting to apply wax in the areas to be left blank before dyeing.

### L3673003 - Rose



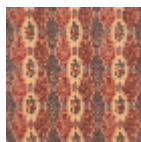
### Le manach

<b>TYPE</b>	Prints
<b>COMPOSITION</b>	100 % Cotton
<b>SALES UNIT</b>	Available per meter/yard
<b>WIDTH</b>	143 cm / 56,29 inch
<b>REPEAT</b>	H: 35 cm - 13,77 inch V: 29 cm - 11,41 inch
<b>WEIGHT</b>	286 gr / ml
<b>CARE</b>	
<b>NOTES</b>	Made in France (EPV Living Heritage Mill)
<b>INFORMATION</b>	Hand screen printed

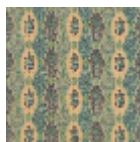
## 3 Colors



L3673003  
Rose



L3673004  
Prune



L3673101  
Vert