


L3699_BEHANZIN_B73_B14_FE BEHANZIN

Jacquard reproducing the pattern of a Kuba velvet from Congo, so called because of the use of looped raffia threads, a distant reminiscence of the loops found in Italian velvets.

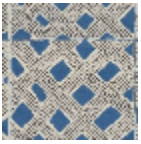
L3699_BEHANZIN_B73_B14_FE -



Le manach

TYPE	Toiles de Tours
DESIGN STRUCTURE	2 Colors, 1 Ground
RECOMMENDED YARNS	Nacré Chenille Bouclette
SPLIT YARNS	Yes
SALES UNIT	Available per meter
WIDTH	125 cm env. / approx 49,21 inch
REPEAT	H: 63 cm env. - approx 24,80 inch V: 65 cm env. - approx 25,59 inch Straight repeat
CARE	
NOTES	Woven in Pierre Frey's workshop in northern France. Living Heritage Mill.

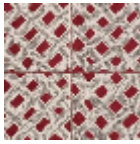
7 Colors



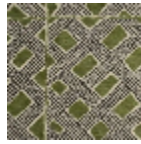
L3699_BEHAN
ZIN_B21_B38_F
E



L3699_BEHAN
ZIN_B73_B14_F
E



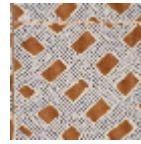
L3699_BEHAN
ZIN_C527_B14_
FE



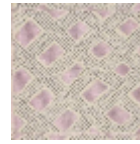
L3699_BEHAN
ZIN_C541_C539
_C508_FG



L3699_BEHAN
ZIN_C544_B41
_FE



L3699_BEHAN
ZIN_N3013_N31
20_FE



L3699_BEHAN
ZIN_N3114_N31
24_FE