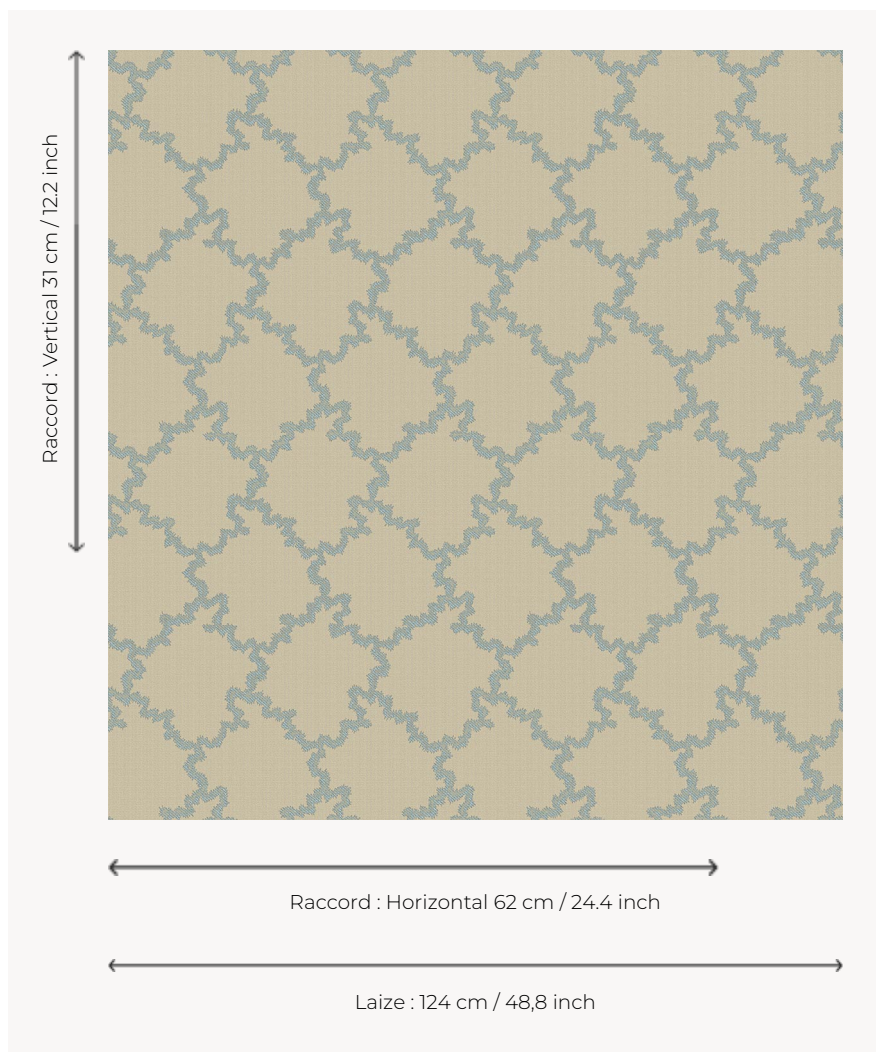


# L3897\_BRODERIE\_MONTESPAN\_N3157\_FE BRODERIE MONTESPAN

The charm of a Louis XV style rockery composition.

## L3897\_BRODERIE\_MONTESPAN\_N3157\_FE -



## Le manach

<b>TYPE</b>	Toiles de Tours
<b>DESIGN STRUCTURE</b>	1 Color, 1 Ground
<b>RECOMMENDED YARNS</b>	Nacré Chenille Bouclette
<b>SPLIT YARNS</b>	Yes
<b>SALES UNIT</b>	Available per meter
<b>WIDTH</b>	124 cm env. / approx 48,80 inch
<b>REPEAT</b>	H: 62 cm env. - approx 24,40 inch V: 31 cm env. - approx 12,20 inch Straight repeat

### CARE



### NOTES

Woven in Pierre Frey's workshop in northern France. Living Heritage Mill. Requires reinforced stitching and appropriate tailoring margins

## 4 Colors



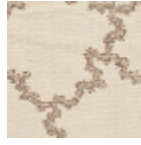
L3897\_BRODE  
RIE\_MONTESP  
AN\_B90\_FE



L3897\_BRODE  
RIE\_MONTESP  
AN\_C533\_FE



L3897\_BRODE  
RIE\_MONTESP  
AN\_C538\_FE



L3897\_BRODE  
RIE\_MONTESP  
AN\_N3157\_FE