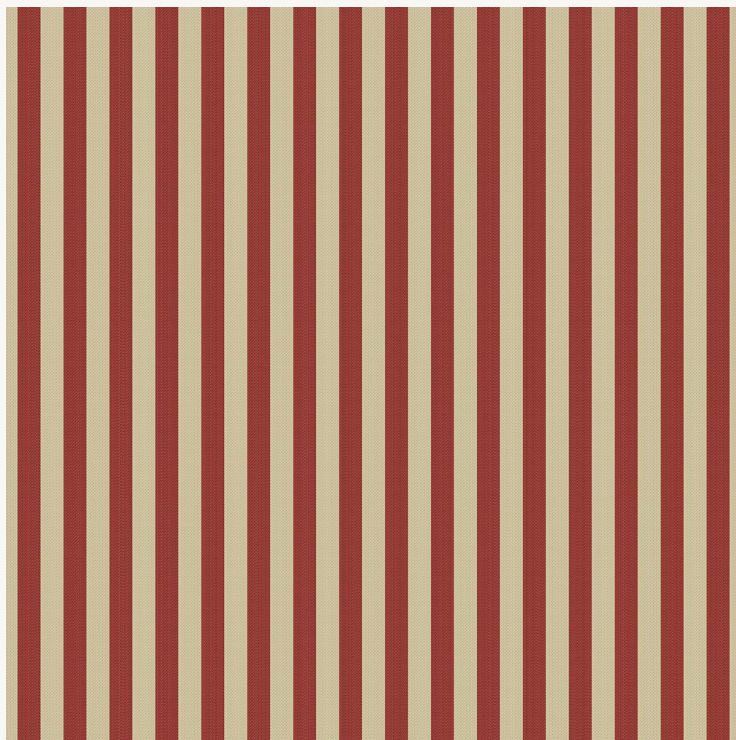


# L3920\_BRIGTON\_N3176\_FM BRIGTON - RAYURE

Classically elegant stripe to be used alone or in addition to a beautiful figurative design.

## L3920\_BRIGTON\_N3176\_FM -



Raccord : Horizontal 7.5 cm / 2.75 inch



Laize : 124 cm / 48,8 inch

## Le manach

<b>TYPE</b>	Toiles de Tours
<b>DESIGN STRUCTURE</b>	1 Color, 1 Ground
<b>RECOMMENDED YARNS</b>	Nacré Chenille Bouclette
<b>SPLIT YARNS</b>	Yes
<b>SALES UNIT</b>	Available per meter
<b>WIDTH</b>	124 cm env. / approx 48,80 inch
<b>REPEAT</b>	H: 7 cm env. - approx 2,75 inch Straight repeat

### CARE



### NOTES

Woven in Pierre Frey's workshop in northern France. Living Heritage Mill.

# 5 Colors



L3920\_BRIGHT  
ON\_N3149\_FA



L3920\_BRIGHT  
ON\_N3176\_FM



L3920\_BRIGHT  
ON\_Rayure\_B7  
6\_FE



L3920\_BRIGHT  
ON\_Rayure\_C5  
31\_FE



L3920\_BRIGHT  
ON\_Rayure\_N3  
003\_FE