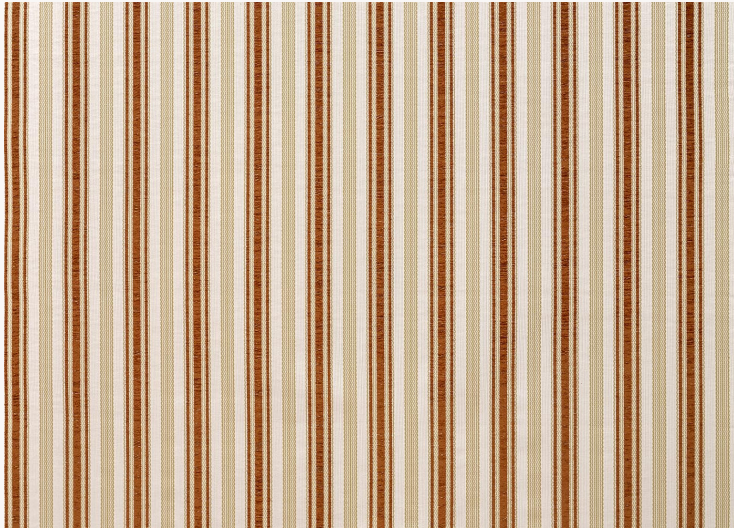


# L4012001 MALMAISON RAYURE OUTDOOR

A vertical wavy stripe inspired by Napoleon I's camp tent. This iconic Maison Le Manach design has been reimagined in a new high-performance outdoor weave by the Pierre Frey workshops in northern France, certified with the EPV label and renowned across Europe for their expertise in stain-resistant and lightfast textiles.

## L4012001 - NATUREL



Raccord : Horizontal 11 cm / 4.33 inch



Laize : 135,00 cm / 53,14 inch

## Le manach

<b>PERFORMANCE</b>	Outdoor
<b>TYPE</b>	-
<b>USE</b>	Moderate use
<b>MARTINDALE</b>	< 20.000 T
<b>COMPOSITION</b>	96 % Acrylic - 4 % Polyamide
<b>SALES UNIT</b>	Available per meter/yard
<b>WIDTH</b>	135 cm / 53,14 inch
<b>REPEAT</b>	H: 11 cm - 4,33 inch
<b>WEIGHT</b>	823 gr / ml
<b>CARE</b>	

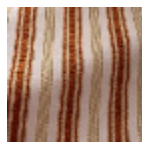
<b>CERTIFICATIONS</b>	NFPA 260-Class 1 CAL TB 117- Pass
-----------------------	--------------------------------------

<b>NOTES</b>	High lightfastness, mold-resistant, stain & water repellent Washable fabric Made in France (EPV Living Heritage Mill) Indoor-Outdoor fabric Woven in Pierre Frey's workshop in northern France. Living Heritage Mill.
--------------	---

<b>INFORMATION</b>	Stripes parallel to selvages Reinforced stitching recommended to avoid fraying at seams For outdoor use, make sure to use appropriate lining materials. Remember to store pads and cushions in a clean, dry place when not in use.
--------------------	---

<b>BOOK</b>	L9979202501
-------------	-------------

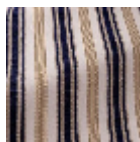
## 3 Colors



L4012001  
NATUREL



L4012002  
SAPIN



L4012003  
MARINE