

L4012002 MALMAISON RAYURE OUTDOOR

A vertical wavy stripe inspired by Napoleon I's camp tent. This iconic Maison Le Manach design has been reimagined in a new high-performance outdoor weave by the Pierre Frey workshops in northern France, certified with the EPV label and renowned across Europe for their expertise in stain-resistant and lightfast textiles.

L4012002 - SAPIN



Raccord : Horizontal 11 cm / 4.33 inch



Laize : 135,00 cm / 53,14 inch

Le manach

PERFORMANCE	Outdoor
TYPE	-
USE	Moderate use
MARTINDALE	< 20.000 T
COMPOSITION	96 % Acrylic - 4 % Polyamide
SALES UNIT	Available per meter/yard
WIDTH	135 cm / 53,14 inch
REPEAT	H: 11 cm - 4,33 inch
WEIGHT	823 gr / ml
CARE	

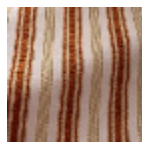
CERTIFICATIONS	NFPA 260-Class 1 CAL TB 117- Pass
-----------------------	--------------------------------------

NOTES	High lightfastness, mold-resistant, stain & water repellent Washable fabric Made in France (EPV Living Heritage Mill) Indoor-Outdoor fabric Woven in Pierre Frey's workshop in northern France. Living Heritage Mill.
--------------	---

INFORMATION	Stripes parallel to selvages Reinforced stitching recommended to avoid fraying at seams For outdoor use, make sure to use appropriate lining materials. Remember to store pads and cushions in a clean, dry place when not in use.
--------------------	---

BOOK	L9979202501
-------------	-------------

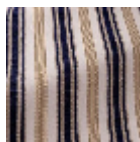
3 Colors



L4012001
NATUREL



L4012002
SAPIN



L4012003
MARINE