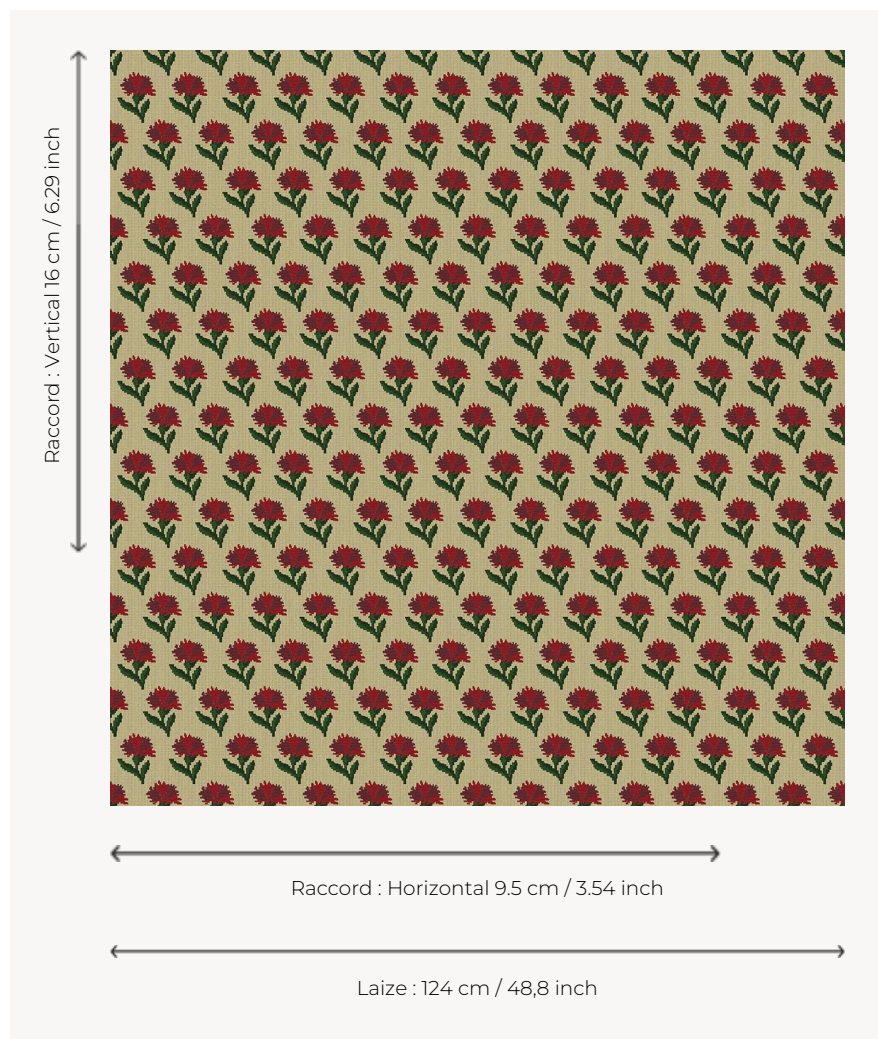


# L4042\_LES\_OEILLETES\_CANEVAS\_B23\_B22\_B02\_B13\_FILES

## OEILLETES CANEVAS

Charming carnation pattern reproducing the delicate petit point embroidery of the Louis XVI period.

L4042\_LES\_OEILLETES\_Canevas\_B23\_B22\_B02\_B13\_FI -



### Le manach

<b>TYPE</b>	Toiles de Tours
<b>DESIGN STRUCTURE</b>	4 Colors, 1 Ground
<b>RECOMMENDED YARNS</b>	Nacré Chenille Bouclette
<b>SALES UNIT</b>	Available per meter
<b>WIDTH</b>	124 cm env. / approx 48,80 inch
<b>REPEAT</b>	H: 9 cm env. - approx 3,54 inch V: 16 cm env. - approx 6,29 inch Straight repeat
<b>CARE</b>	
<b>NOTES</b>	Woven in Pierre Frey's workshop in northern France. Living Heritage Mill.

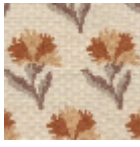
## 6 Colors



L4042\_LES\_OE  
ILLETS\_Caneva  
s\_B23\_B22\_B0  
2\_B13\_FI



L4042\_LES\_OE  
ILLETS\_Caneva  
s\_B23\_B22\_B5  
8\_B57\_FI



L4042\_LES\_OE  
ILLETS\_Caneva  
s\_B70\_B94\_B6  
7\_B57\_FE



L4042\_LES\_OE  
ILLETS\_Caneva  
s\_B76\_B23\_B3  
7\_B21\_FE



L4042\_LES\_OE  
ILLETS\_Caneva  
s\_C517\_C517\_C  
517\_C517\_FM



L4042\_LES\_OE  
ILLETS\_Caneva  
s\_N3017\_N3017  
\_N3022\_N3022  
\_FE