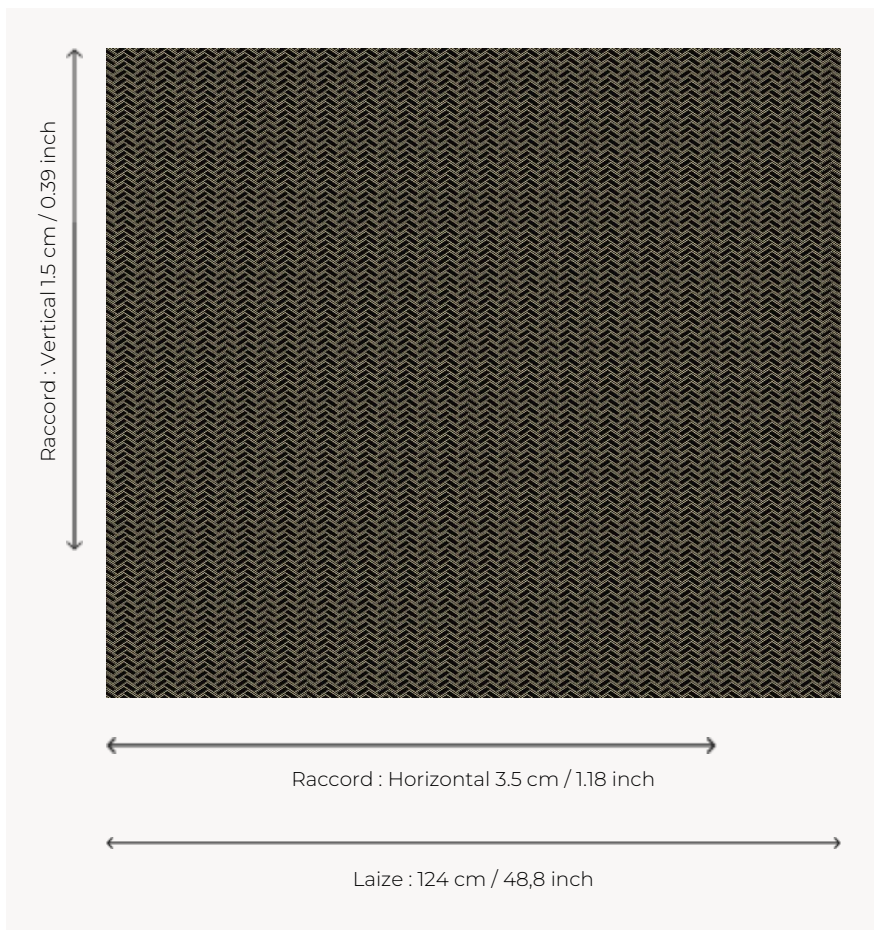


# L4077\_CHEVRONS\_N3016\_C540\_FE CHEVRONS

Pattern reminiscent of the fashionable motifs in men's costume at the end of the 16th century under Spanish influence.

## L4077\_CHEVRONS\_N3016\_C540\_FE -



## Le manach

<b>TYPE</b>	Toiles de Tours
<b>DESIGN STRUCTURE</b>	1 Color, 1 Ground
<b>RECOMMENDED YARNS</b>	Nacré Chenille Bouclette
<b>SPLIT YARNS</b>	Yes
<b>SALES UNIT</b>	Available per meter
<b>WIDTH</b>	124 cm env. / approx 48,80 inch
<b>REPEAT</b>	H: 3 cm env. - approx 1,18 inch V: 1 cm env. - approx 0,39 inch Straight repeat

**CARE**

**NOTES** Woven in Pierre Frey's workshop in northern France. Living Heritage Mill.

### 3 Colors



L4077\_CHEVR  
ONS\_B54\_FI



L4077\_CHEVR  
ONS\_N3016\_C5  
40\_FE



L4077\_CHEVR  
ONS\_N3121\_FE