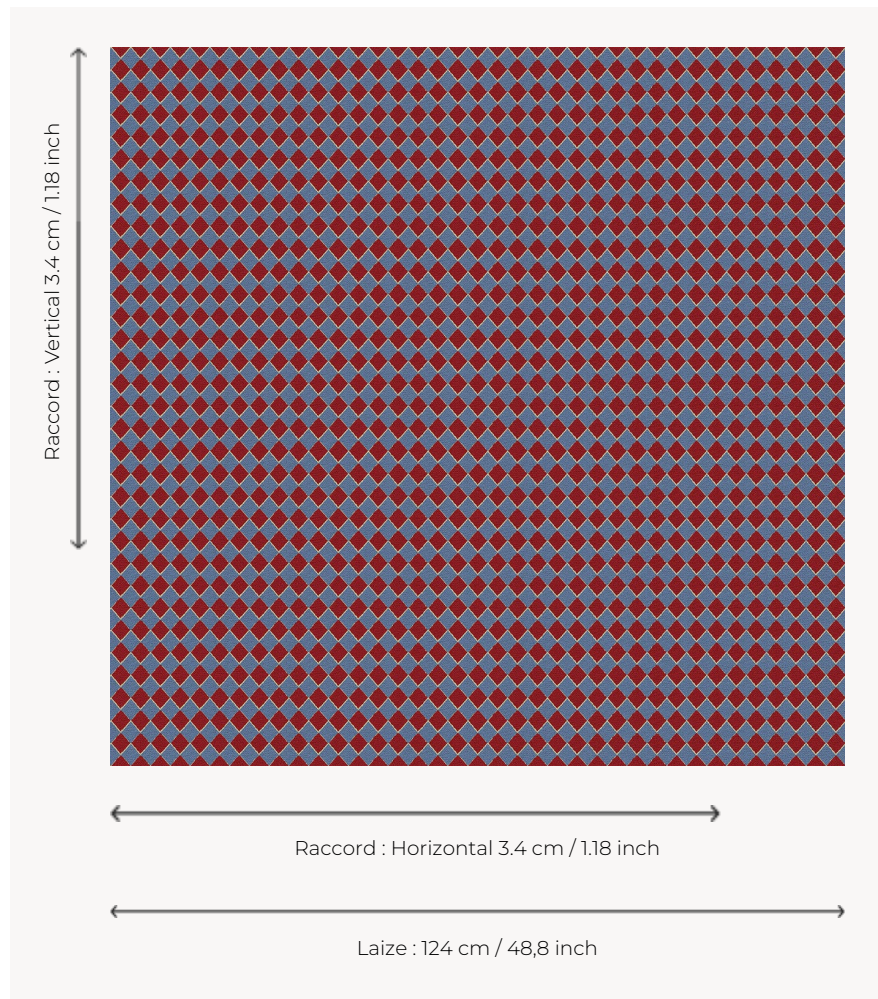


# L4092\_ARLEQUIN\_B90\_N3004\_FE ARLEQUIN

Two-tone variation for this design popularized by the Commedia dell'arte.

## L4092\_ARLEQUIN\_B90\_N3004\_FE -



## Le manach

<b>TYPE</b>	Toiles de Tours
<b>DESIGN STRUCTURE</b>	2 Colors, 1 Ground
<b>RECOMMENDED YARNS</b>	Nacré Chenille Bouclette
<b>SPLIT YARNS</b>	Yes
<b>SALES UNIT</b>	Available per meter
<b>WIDTH</b>	124 cm env. / approx 48,80 inch
<b>REPEAT</b>	H: 3 cm env. - approx 1,18 inch V: 3 cm env. - approx 1,18 inch Straight repeat

### CARE



### NOTES

Woven in Pierre Frey's workshop in northern France. Living Heritage Mill.  
Fabric coord: L4449 ARLEQUIN  
Multicolore

# 5 Colors



L4092\_ARLEQ  
UIN\_B54\_B22\_  
FE



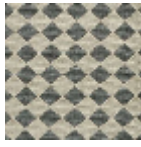
L4092\_ARLEQ  
UIN\_B90\_N30  
04\_FE



L4092\_ARLEQ  
UIN\_C511\_N315  
7\_FE



L4092\_ARLEQ  
UIN\_N3013\_C5  
08\_FE



L4092\_ARLEQ  
UIN\_N3132\_N31  
37\_FE