

## L4145003 VICTOR HUGO - IMPRIMÉ

Victor Hugo was thought to have owned the document that inspired this fabric. Typical of the works of the second half of the 17th century, it features a stylised floral pattern bordered by a vertical band around which is entwined a garland of leaves. This motif is also produced in Toile de Tours.

### L4145003 - Lin



### Le manach

<b>TYPE</b>	Prints
<b>COMPOSITION</b>	54 % Linen - 46 % Cotton
<b>SALES UNIT</b>	Available per meter/yard
<b>WIDTH</b>	123 cm / 48,42 inch
<b>REPEAT</b>	H: 62 cm - 24,40 inch V: 95 cm - 37,40 inch
<b>WEIGHT</b>	409 gr / ml
<b>CARE</b>	
<b>NOTES</b>	Made in France (EPV Living Heritage Mill)
<b>INFORMATION</b>	Hand screen printed

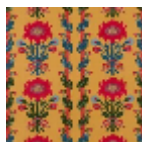
### 3 Colors



L4145001  
Original



L4145003  
Lin



L4145100  
Jaune