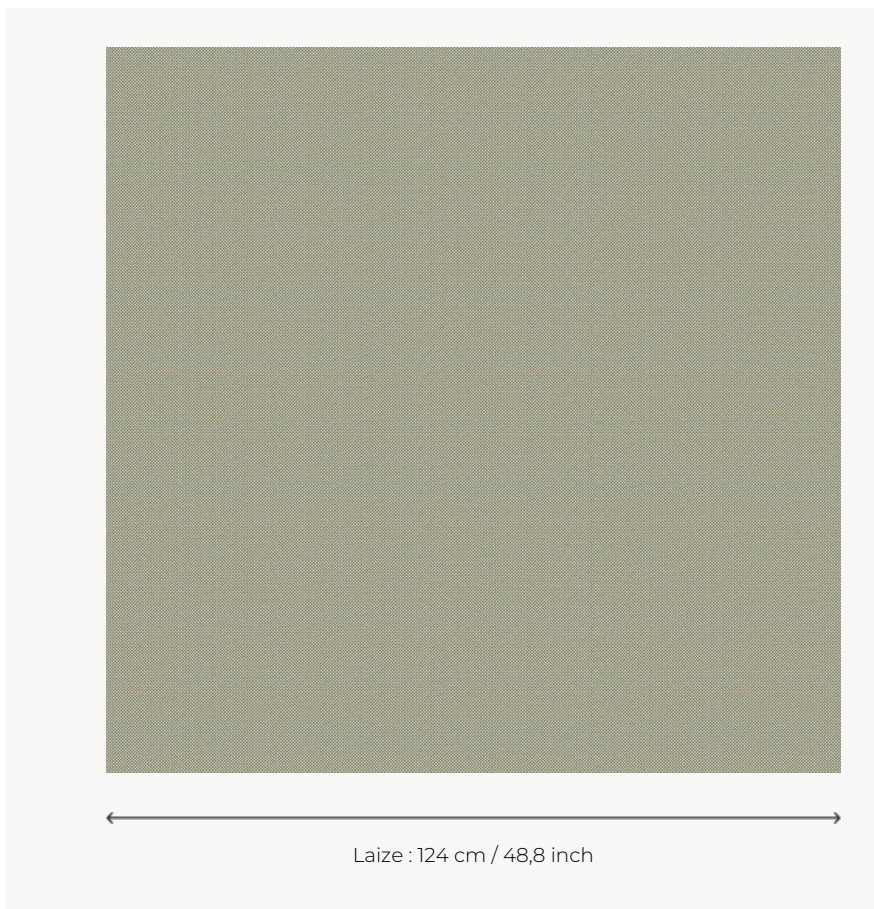


L4152_POINT_DE_TOURS_B38 POINT DE TOURS

L4152_POINT_DE_TOURS_B38 -



Le manach

TYPE	Toiles de Tours
DESIGN STRUCTURE	1 Color
RECOMMENDED YARNS	Nacré Chenille Bouclette
SPLIT YARNS	Yes
REVERSIBLE	Yes
SALES UNIT	Available per meter
WIDTH	124 cm env. / approx 48,80 inch
REPEAT	Straight repeat
CARE	
NOTES	Woven in Pierre Frey's workshop in northern France. Living Heritage Mill.
BOOK	L99792304

51 Colors



L4152_POINT_
DE_TOURS_B0



L4152_POINT_
DE_TOURS_B0
2



L4152_POINT_
DE_TOURS_B0
4



L4152_POINT_
DE_TOURS_B0
5



L4152_POINT_
DE_TOURS_B0
6



L4152_POINT_
DE_TOURS_B0
8



L4152_POINT_
DE_TOURS_B11
3



L4152_POINT_
DE_TOURS_B1
4



L4152_POINT_
DE_TOURS_B1



L4152_POINT_
DE_TOURS_B1
5



L4152_POINT_
DE_TOURS_B1
7



L4152_POINT_
DE_TOURS_B1
9



L4152_POINT_
DE_TOURS_B2
0



L4152_POINT_
DE_TOURS_B2
1



L4152_POINT_
DE_TOURS_B2
2



L4152_POINT_
DE_TOURS_B2
3



L4152_POINT_
DE_TOURS_B2
8



L4152_POINT_
DE_TOURS_B2
9



L4152_POINT_
DE_TOURS_B3
0



L4152_POINT_
DE_TOURS_B3
1



L4152_POINT_
DE_TOURS_B3
2



L4152_POINT_
DE_TOURS_B3
7



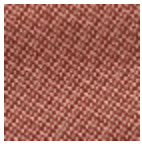
L4152_POINT_
DE_TOURS_B3
8



L4152_POINT_
DE_TOURS_B3
9



L4152_POINT_
DE_TOURS_B4
0



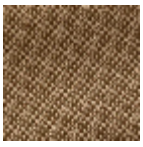
L4152_POINT_
DE_TOURS_B4
1



L4152_POINT_
DE_TOURS_B4
2



L4152_POINT_
DE_TOURS_B4
5



L4152_POINT_
DE_TOURS_B4
6



L4152_POINT_
DE_TOURS_B5
4



L4152_POINT_
DE_TOURS_B5
6



L4152_POINT_
DE_TOURS_B5
7



L4152_POINT_
DE_TOURS_B5
8



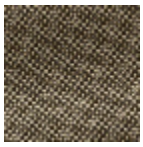
L4152_POINT_
DE_TOURS_B6
5



L4152_POINT_
DE_TOURS_B6
7



L4152_POINT_
DE_TOURS_B6
8



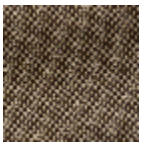
L4152_POINT_
DE_TOURS_B6
9



L4152_POINT_
DE_TOURS_B7
0



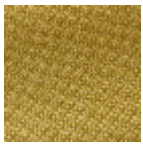
L4152_POINT_
DE_TOURS_B7
1



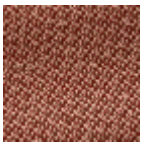
L4152_POINT_
DE_TOURS_B7
2



L4152_POINT_
DE_TOURS_B7
3



L4152_POINT_
DE_TOURS_B7
6



L4152_POINT_
DE_TOURS_B8
4



L4152_POINT_
DE_TOURS_B8
7



L4152_POINT_
DE_TOURS_B8
8



L4152_POINT_
DE_TOURS_B9
0



L4152_POINT_
DE_TOURS_B9
1



L4152_POINT_
DE_TOURS_B9
2



L4152_POINT_
DE_TOURS_B9
3



L4152_POINT_
DE_TOURS_B9
4



L4152_POINT_
DE_TOURS_B9
5