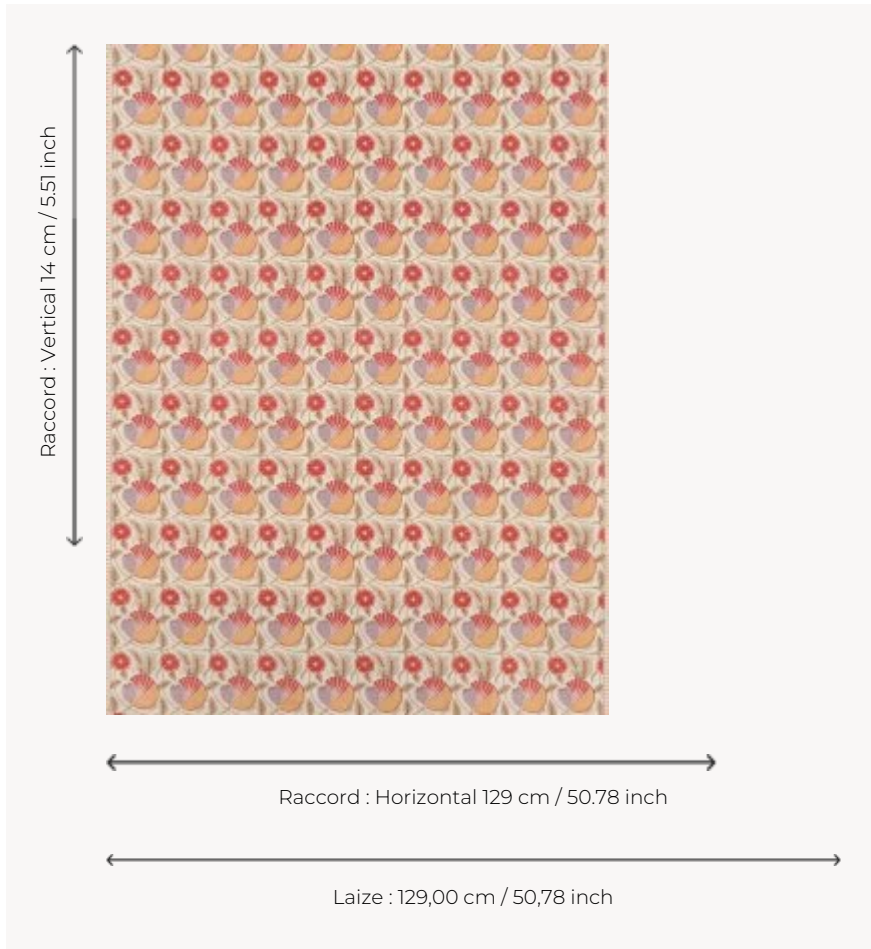


L4164005 INDHIRA

This fabric reproduces the pattern used for an early 20th century Indian sari. With an all-over motif of stylised flowers, it evokes the timeless charm of block-printed designs.

L4164005 - Coquille



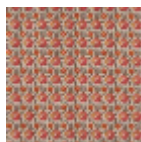
Le manach

TYPE	Prints
COMPOSITION	100 % Cotton
SALES UNIT	Available per meter/yard
WIDTH	129 cm / 50,78 inch
REPEAT	H: 129 cm - 50,78 inch V: 14 cm - 5,51 inch
WEIGHT	175 gr / ml
CARE	
NOTES	Made in France (EPV Living Heritage Mill)
INFORMATION	Hand screen printed

2 Colors



L4164005
Coquille



L4164006
Ambre