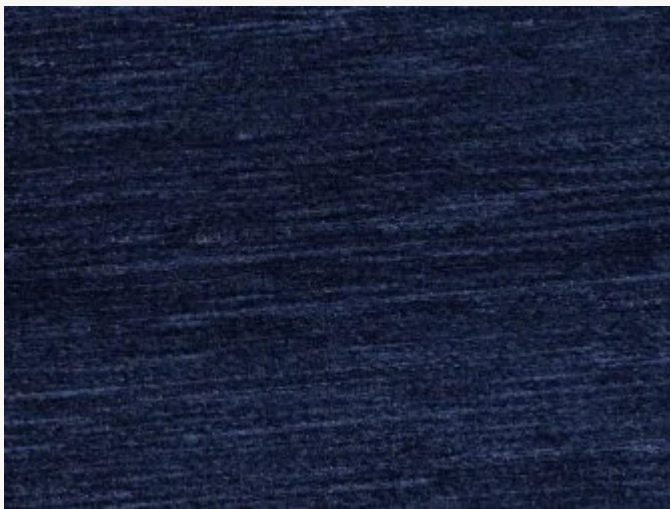


L4289_CDT_C531 CHENILLE DE TOURS

The woolly and silky aspect of this chenille yarn offers a sophisticated relief in the spirit of the most refined cut velvet.

L4289_CDT_C531 - Bleu nuit



← Laize : 128 cm / 50,39 inch →

Le manach

PERFORMANCE	High Rub Test
TYPE	Toiles de Tours
DESIGN STRUCTURE	1 Color
SPLIT YARNS	Yes
USE	Intensive use
MARTINDALE	60.000 T
COMPOSITION	80% Viscose - 18% Coton / Cotton - 2% Polyamide
SALES UNIT	Available per meter
WIDTH	128 cm env. / approx 50,39 inch
WEIGHT	600 gr / ml
CARE	
CERTIFICATIONS	EN1021-1-2 in conjunction with suitable combustion modified foam
NOTES	Woven in Pierre Frey's workshop in northern France. Living Heritage Mill. Can be embossed
BOOK	L99792305

44 Colors



L4289_CDT_C5

00

Neige



L4289_CDT_C5

01

Nacre



L4289_CDT_C5

03

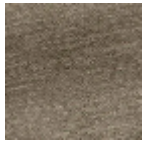
Gypse



L4289_CDT_C5

04

Fauvette



L4289_CDT_C5

05

Chinchilla



L4289_CDT_C5

06

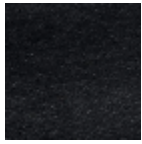
Cendre



L4289_CDT_C5

07

Charbon



L4289_CDT_C5

08

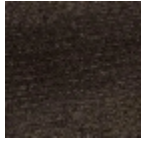
Black



L4289_CDT_C5

09

Cacao



L4289_CDT_C5

10

Ecorce



L4289_CDT_C5

11

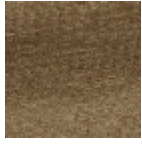
Taupe



L4289_CDT_C5

12

Noisette



L4289_CDT_C5

13

Moka



L4289_CDT_C5

14

Grège



L4289_CDT_C5

15

Pépîte



L4289_CDT_C5

16

Vieil or



L4289_CDT_C5

17

Faisan



L4289_CDT_C5

18

Orange



L4289_CDT_C5

19

Braise



L4289_CDT_C5

20

Ecarlate



L4289_CDT_C5

21

Tomette



L4289_CDT_C5

22

Amarante



L4289_CDT_C5

23

Géranium



L4289_CDT_C5

24

Rose



L4289_CDT_C5

25

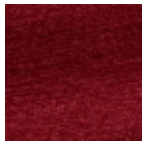
Cerise



L4289_CDT_C5

26

Grenat



L4289_CDT_C5

27

Grenade



L4289_CDT_C5

28

Iris



L4289_CDT_C5

29

Pensée



L4289_CDT_C5

30

Rose ancien



L4289_CDT_C5

31

Bleu nuit



L4289_CDT_C5

32

Bleuet



L4289_CDT_C5

33

Orage



L4289_CDT_C5

34

Bleu ancien



L4289_CDT_C5

35

Bleu océan



L4289_CDT_C5

36

Caraïbes



L4289_CDT_C5

37

Vert d'eau



L4289_CDT_C5

38

Cactus



L4289_CDT_C5

39

Bronze



L4289_CDT_C5

40

Vert empire



L4289_CDT_C5

41

Mousson



L4289_CDT_C5

42

Olive



L4289_CDT_C5

43

Tilleul



L4289_CDT_C5

44

Chardon