

# L4289\_CDT\_C537 CHENILLE DE TOURS

The woolly and silky aspect of this chenille yarn offers a sophisticated relief in the spirit of the most refined cut velvet.

## L4289\_CDT\_C537 - Vert d'eau



Laize : 128 cm / 50,39 inch

## Le manach

<b>PERFORMANCE</b>	High Rub Test
<b>TYPE</b>	Toiles de Tours
<b>DESIGN STRUCTURE</b>	1 Color
<b>SPLIT YARNS</b>	Yes
<b>USE</b>	Intensive use
<b>MARTINDALE</b>	60.000 T
<b>COMPOSITION</b>	80% Viscose - 18% Coton / Cotton - 2% Polyamide
<b>SALES UNIT</b>	Available per meter
<b>WIDTH</b>	128 cm env. / approx 50,39 inch
<b>WEIGHT</b>	600 gr / ml
<b>CARE</b>	
<b>CERTIFICATIONS</b>	EN1021-1-2 in conjunction with suitable combustion modified foam
<b>NOTES</b>	Woven in Pierre Frey's workshop in northern France. Living Heritage Mill. Can be embossed
<b>BOOK</b>	L99792305

# 44 Colors



L4289\_CDT\_C5

00

Neige



L4289\_CDT\_C5

01

Nacre



L4289\_CDT\_C5

03

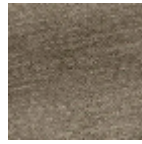
Gypse



L4289\_CDT\_C5

04

Fauvette



L4289\_CDT\_C5

05

Chinchilla



L4289\_CDT\_C5

06

Cendre



L4289\_CDT\_C5

07

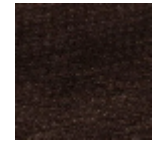
Charbon



L4289\_CDT\_C5

08

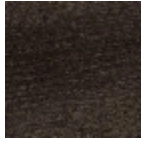
Black



L4289\_CDT\_C5

09

Cacao



L4289\_CDT\_C5

10

Ecorce



L4289\_CDT\_C5

11

Taupe



L4289\_CDT\_C5

12

Noisette



L4289\_CDT\_C5

13

Moka



L4289\_CDT\_C5

14

Grège



L4289\_CDT\_C5

15

Pépîte



L4289\_CDT\_C5

16

Vieil or



L4289\_CDT\_C5

17

Faisan



L4289\_CDT\_C5

18

Orange



L4289\_CDT\_C5

19

Braise



L4289\_CDT\_C5

20

Ecarlate



L4289\_CDT\_C5

21

Tomette



L4289\_CDT\_C5

22

Amarante



L4289\_CDT\_C5

23

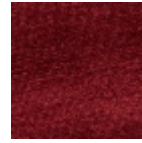
Géranium



L4289\_CDT\_C5

24

Rose



L4289\_CDT\_C5

25

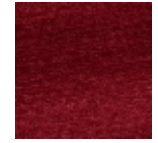
Cerise



L4289\_CDT\_C5

26

Grenat



L4289\_CDT\_C5

27

Grenade



L4289\_CDT\_C5

28

Iris



L4289\_CDT\_C5

29

Pensée



L4289\_CDT\_C5

30

Rose ancien



L4289\_CDT\_C5

31

Bleu nuit



L4289\_CDT\_C5

32

Bleuet



L4289\_CDT\_C5

33

Orage



L4289\_CDT\_C5

34

Bleu ancien



L4289\_CDT\_C5

35

Bleu océan



L4289\_CDT\_C5

36

Caraïbes



L4289\_CDT\_C5

37

Vert d'eau



L4289\_CDT\_C5

38

Cactus



L4289\_CDT\_C5

39

Bronze



L4289\_CDT\_C5

40

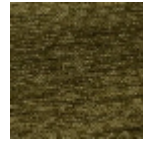
Vert empire



L4289\_CDT\_C5

41

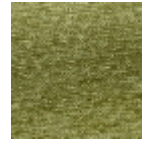
Mousson



L4289\_CDT\_C5

42

Olive



L4289\_CDT\_C5

43

Tilleul



L4289\_CDT\_C5

44

Chardon