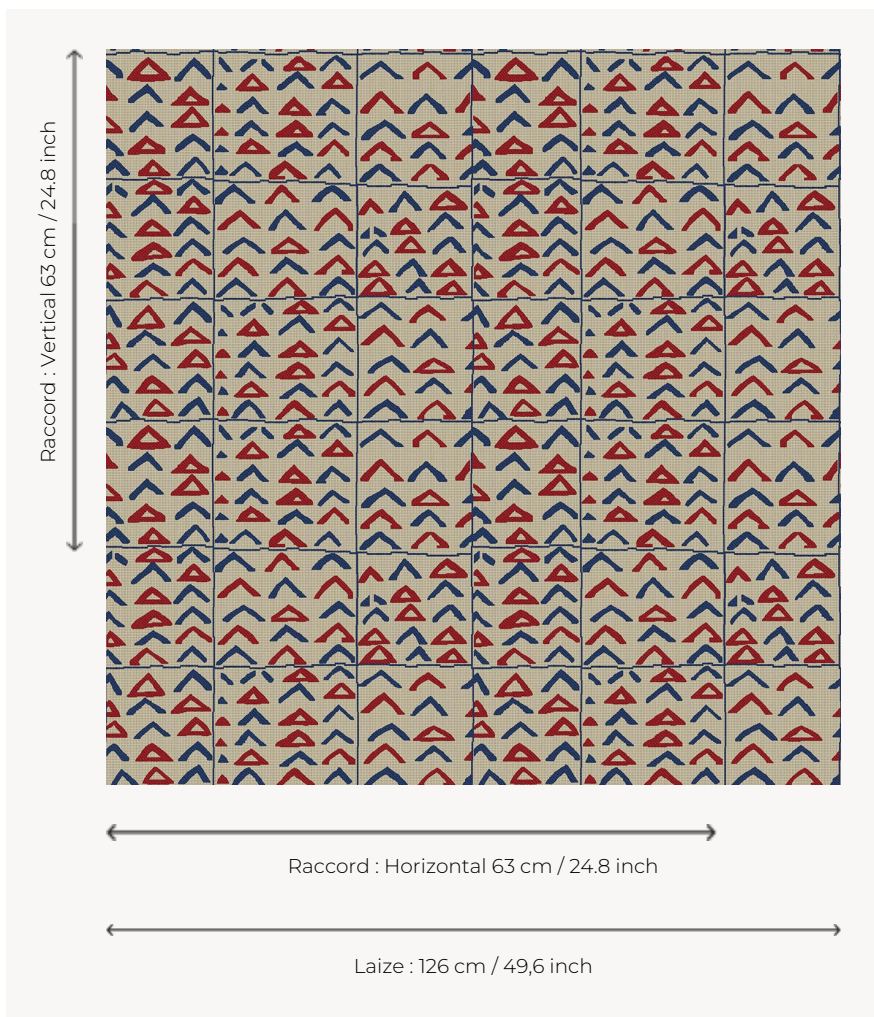


## L4307\_NIAMEY\_B58\_B57\_FE NIAMEY

Reproduction of a very beautiful Kuba velvet from Congo, so called due to the use of curly raffia yarns, a distant echo of European chiselled velvet. This design is part of the great tradition of African drawings that Le Manach published in 1928.

### L4307\_NIAMEY\_B58\_B57\_FE -



### Le manach

|                          |   |
|--------------------------|---|
| <b>TYPE</b>              | Toiles de Tours   |
| <b>DESIGN STRUCTURE</b>  | 2 Colors, 1 Ground  |
| <b>RECOMMENDED YARNS</b> | Nacré<br>Chenille<br>Bouclette  |
| <b>SPLIT YARNS</b>       | Yes   |
| <b>SALES UNIT</b>        | Available per meter   |
| <b>WIDTH</b>             | 126 cm env. / approx 49,60 inch   |
| <b>REPEAT</b>            | H: 63 cm env. - approx 24,80 inch<br>V: 63 cm env. - approx 24,80 inch<br>Straight repeat |
| <b>CARE</b>              |   |
| <b>NOTES</b>             | Woven in Pierre Frey's workshop in northern France. Living Heritage Mill.                 |

# 5 Colors



L4307\_NIAME  
Y\_B56\_B28\_FE



L4307\_NIAME  
Y\_B58\_B57\_FE



L4307\_NIAME  
Y\_B93\_B02\_B9  
2\_FE



L4307\_NIAME  
Y\_N3002\_N30  
04\_FE



L4307\_NIAME  
Y\_N3004\_B54\_  
FE