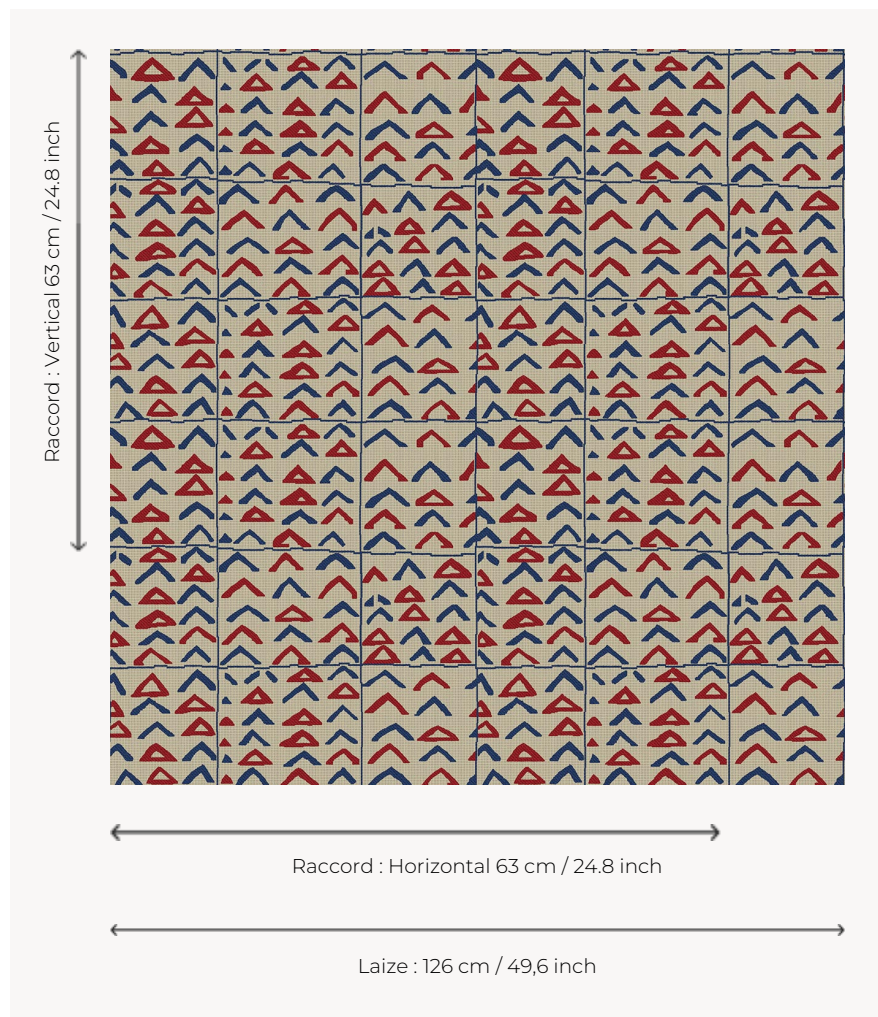


## L4307\_NIAMEY\_B93\_B02\_B92\_FE NIAMEY

Reproduction of a very beautiful Kuba velvet from Congo, so called due to the use of curly raffia yarns, a distant echo of European chiselled velvet. This design is part of the great tradition of African drawings that Le Manach published in 1928.

### L4307\_NIAMEY\_B93\_B02\_B92\_FE -



### Le manach

<b>TYPE</b>	Toiles de Tours
<b>DESIGN STRUCTURE</b>	2 Colors, 1 Ground
<b>RECOMMENDED YARNS</b>	Nacré Chenille Bouclette
<b>SPLIT YARNS</b>	Yes
<b>SALES UNIT</b>	Available per meter
<b>WIDTH</b>	126 cm env. / approx 49,60 inch
<b>REPEAT</b>	H: 63 cm env. - approx 24,80 inch V: 63 cm env. - approx 24,80 inch Straight repeat
<b>CARE</b>	
<b>NOTES</b>	Woven in Pierre Frey's workshop in northern France. Living Heritage Mill.

# 5 Colors



L4307\_NIAME  
Y\_B56\_B28\_FE



L4307\_NIAME  
Y\_B58\_B57\_FE



L4307\_NIAME  
Y\_B93\_B02\_B9  
2\_FE



L4307\_NIAME  
Y\_N3002\_N30  
04\_FE



L4307\_NIAME  
Y\_N3004\_B54\_  
FE