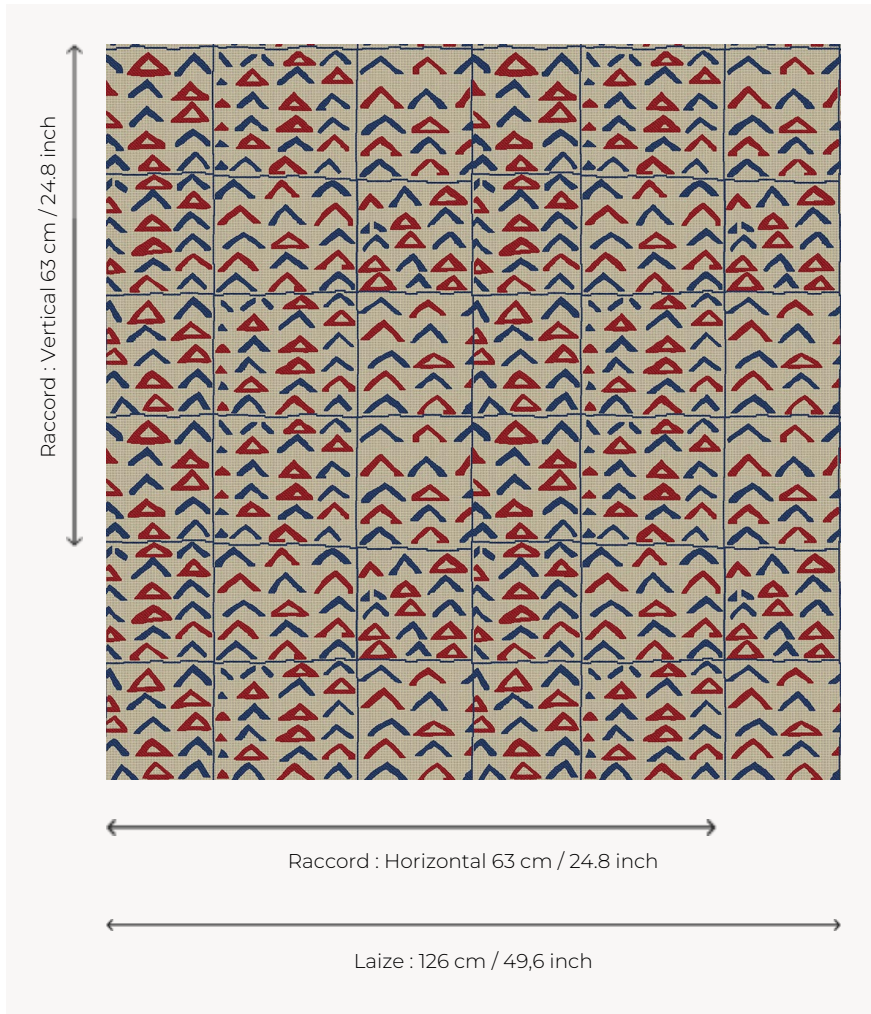


L4307_NIAMEY_N3002_N3004_FE NIAMEY

Reproduction of a very beautiful Kuba velvet from Congo, so called due to the use of curly raffia yarns, a distant echo of European chiselled velvet. This design is part of the great tradition of African drawings that Le Manach published in 1928.

L4307_NIAMEY_N3002_N3004_FE -



Le manach

TYPE	Toiles de Tours
DESIGN STRUCTURE	2 Colors, 1 Ground
RECOMMENDED YARNS	Nacré Chenille Bouclette
SPLIT YARNS	Yes
SALES UNIT	Available per meter
WIDTH	126 cm env. / approx 49,60 inch
REPEAT	H: 63 cm env. - approx 24,80 inch V: 63 cm env. - approx 24,80 inch Straight repeat
CARE	
NOTES	Woven in Pierre Frey's workshop in northern France. Living Heritage Mill.

5 Colors



L4307_NIAME
Y_B56_B28_FE



L4307_NIAME
Y_B58_B57_FE



L4307_NIAME
Y_B93_B02_B9
2_FE



L4307_NIAME
Y_N3002_N30
04_FE



L4307_NIAME
Y_N3004_B54_
FE