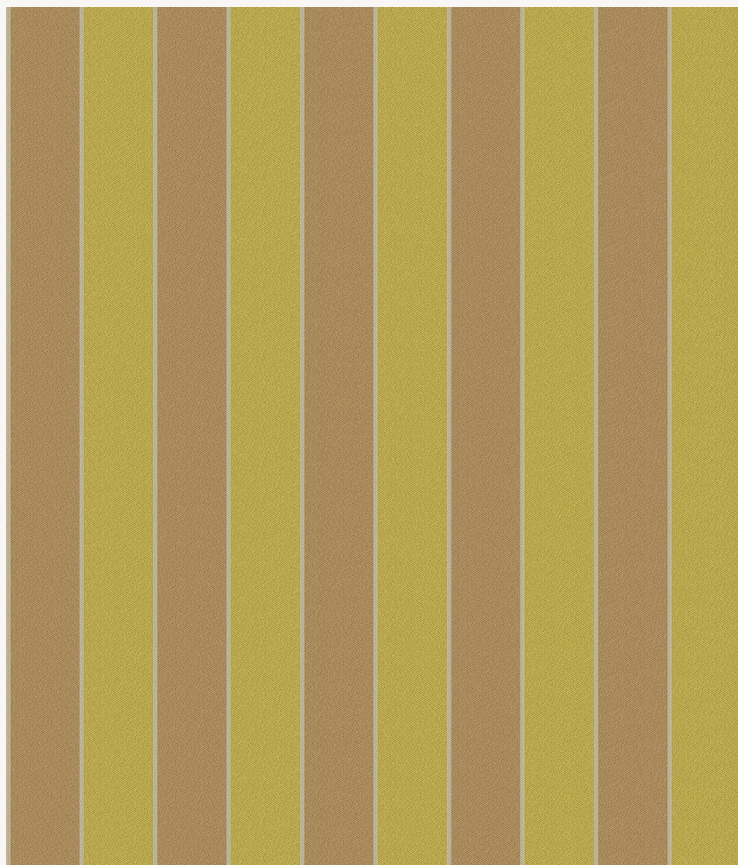


L4345_COLLIOURE_RAYURE_B68_B94_FE COLLIOURE RAYURE

Wide vertical stripes allowing classic or contemporary colour contrasts.

L4345_COLLIOURE_Rayure_B68_B94_FE -



Raccord : Horizontal 25 cm / 9.84 inch



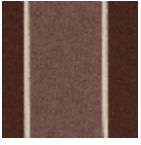
Laize : 125 cm / 49,21 inch

Le manach

TYPE	Toiles de Tours
DESIGN STRUCTURE	2 Colors, 1 Ground
RECOMMENDED YARNS	Nacré Chenille Bouclette
SPLIT YARNS	Yes
SALES UNIT	Available per meter
WIDTH	125 cm env. / approx 49,21 inch
REPEAT	H: 25 cm env. - approx 9,84 inch Straight repeat
CARE	

NOTES Woven in Pierre Frey's workshop in northern France. Living Heritage Mill.

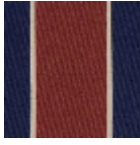
3 Colors



L4345_COLLIO
URE_Rayure_B
68_B94_FE



L4345_COLLIO
URE_Rayure_C
530_C506_FG



L4345_COLLIO
URE_Rayure_N
3163_N3011_FG