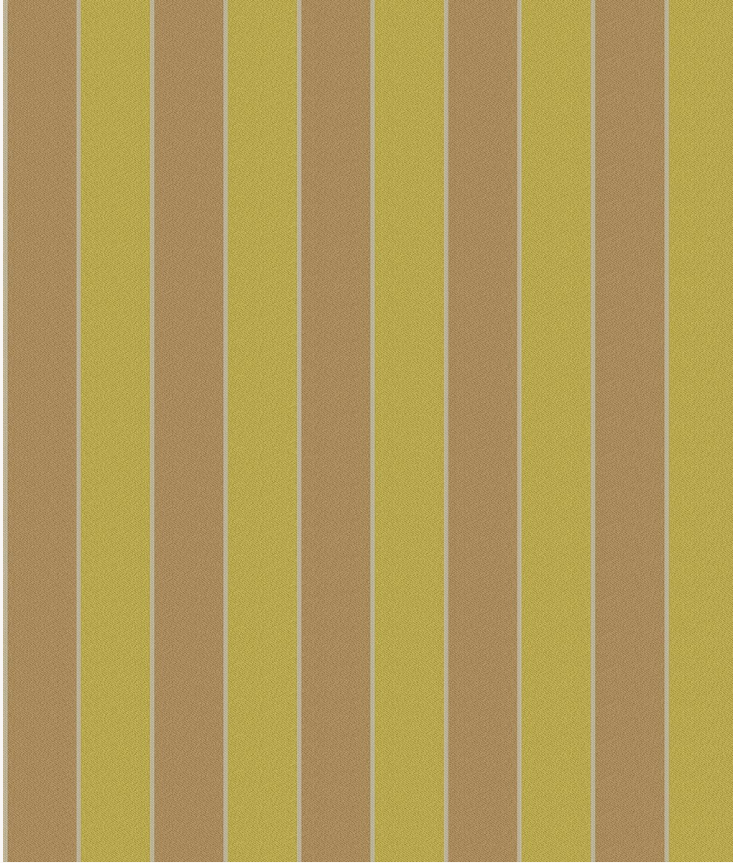


# L4345\_COLLIOURE\_RAYURE\_C530\_C506\_FG COLLIOURE RAYURE

Wide vertical stripes allowing classic or contemporary colour contrasts.

## L4345\_COLLIOURE\_Rayure\_C530\_C506\_FG -



Raccord : Horizontal 25 cm / 9.84 inch



Laize : 125 cm / 49,21 inch

## Le manach

<b>TYPE</b>	Toiles de Tours
<b>DESIGN STRUCTURE</b>	2 Colors, 1 Ground
<b>RECOMMENDED YARNS</b>	Nacré Chenille Bouclette
<b>SPLIT YARNS</b>	Yes
<b>SALES UNIT</b>	Available per meter
<b>WIDTH</b>	125 cm env. / approx 49,21 inch
<b>REPEAT</b>	H: 25 cm env. - approx 9,84 inch Straight repeat

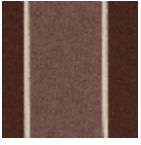
### CARE



### NOTES

Woven in Pierre Frey's workshop in northern France. Living Heritage Mill.

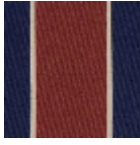
## 3 Colors



L4345\_COLLIO  
URE\_Rayure\_B  
68\_B94\_FE



L4345\_COLLIO  
URE\_Rayure\_C  
530\_C506\_FG



L4345\_COLLIO  
URE\_Rayure\_N  
3163\_N3011\_FG