


# L4415\_ERABLES\_B2\_FE\_VERSO ERABLES

Botanical design created around 1937 by Armand-Albert Rateau, a great decorator of the first half of the 20th century.

## L4415\_ERABLES\_B2\_FE\_VERSO -



## Le manach

<b>TYPE</b>	Toiles de Tours
<b>DESIGN STRUCTURE</b>	1 Color, 1 Ground
<b>RECOMMENDED YARNS</b>	Nacré Chenille Bouclette
<b>SPLIT YARNS</b>	Yes
<b>REVERSIBLE</b>	Yes
<b>SALES UNIT</b>	Available per meter
<b>WIDTH</b>	126 cm env. / approx 49,60 inch
<b>REPEAT</b>	H: 31 cm env. - approx 12,20 inch V: 31 cm env. - approx 12,20 inch Straight repeat
<b>CARE</b>	
<b>NOTES</b>	Woven in Pierre Frey's workshop in northern France. Living Heritage Mill.

## 4 Colors



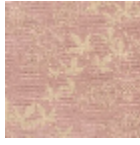
L4415\_ERABLE  
S\_B2\_FE



L4415\_ERABLE  
S\_B2\_FE\_VERS  
O



L4415\_ERABLE  
S\_N3022\_FE



L4415\_ERABLE  
S\_N3022\_FE\_V  
ERSO