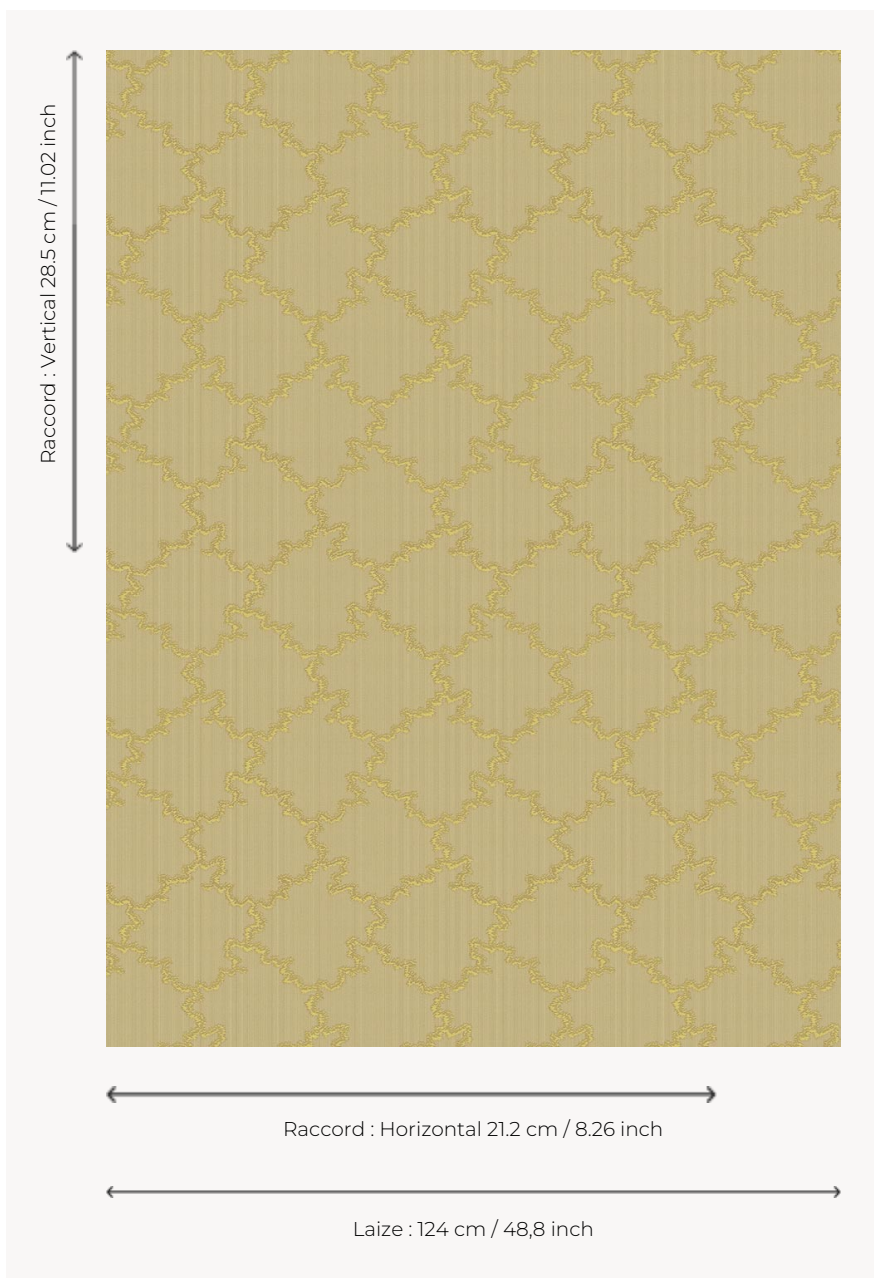


# L4426\_MONTESPAN\_CANEVAS\_N3104\_FE\_VERSO MONTESPAN CANEVAS

The charm of a Louis XV style rockery composition.

## L4426\_MONTESPAN\_Canevas\_N3104\_FE\_Verso -

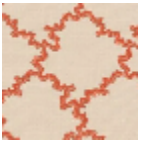


## Le manach

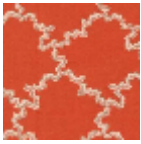
<b>TYPE</b>	Toiles de Tours
<b>DESIGN STRUCTURE</b>	1 Color, 1 Ground
<b>RECOMMENDED YARNS</b>	Nacré Chenille Bouclette
<b>SPLIT YARNS</b>	Yes
<b>REVERSIBLE</b>	Yes
<b>SALES UNIT</b>	Available per meter
<b>WIDTH</b>	124 cm env. / approx 48,80 inch
<b>REPEAT</b>	H: 21 cm env. - approx 8,26 inch V: 28 cm env. - approx 11,02 inch Straight repeat
<b>CARE</b>	

**NOTES** Woven in Pierre Frey's workshop in northern France. Living Heritage Mill.

# 8 Colors



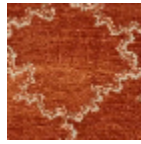
L4426\_MONTE  
SPAN\_Canevas  
\_B92\_FE



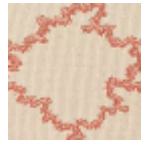
L4426\_MONTE  
SPAN\_Canevas  
\_B92\_FE\_Verso



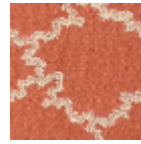
L4426\_MONTE  
SPAN\_Canevas  
\_C517\_FA



L4426\_MONTE  
SPAN\_Canevas  
\_C517\_FA\_Vers  
o



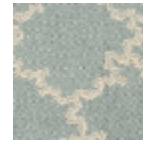
L4426\_MONTE  
SPAN\_Canevas  
\_N3104\_FE



L4426\_MONTE  
SPAN\_Canevas  
\_N3104\_FE\_Ver  
so



L4426\_MONTE  
SPAN\_Canevas  
\_N3133\_FE



L4426\_MONTE  
SPAN\_Canevas  
\_N3133\_FE\_Ver  
so