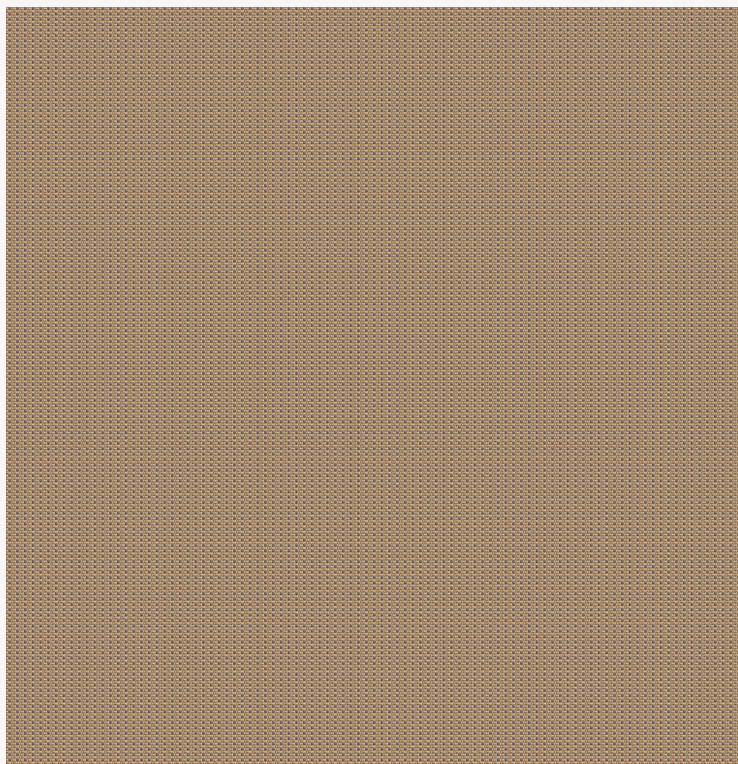


L4432_PIED_DE_COQ_N3180_N3011 PIED DE COQ

This emblematic pattern of 1950s fashion is here proposed in a upholstery version.

L4432_PIED_DE_COQ_N3180_N3011 -



Laize : 124 cm / 48,8 inch

Le manach

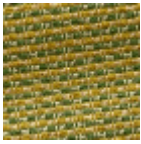
TYPE	Toiles de Tours
DESIGN STRUCTURE	2 Colors
RECOMMENDED YARNS	Nacré Chenille Bouclette
SPLIT YARNS	Yes
SALES UNIT	Available per meter
WIDTH	124 cm env. / approx 48,80 inch
CARE	

NOTES Woven in Pierre Frey's workshop in northern France. Living Heritage Mill. Requires reinforced stitching and appropriate tailoring margins

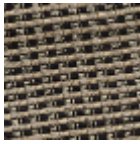
8 Colors



L4432_PIED_D
E_COQ_B14_N
3013



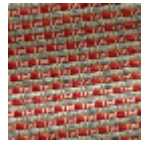
L4432_PIED_D
E_COQ_B76_B
23



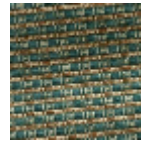
L4432_PIED_D
E_COQ_C508_
C505



L4432_PIED_D
E_COQ_N3012_
N3016



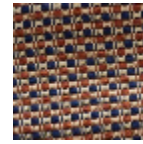
L4432_PIED_D
E_COQ_N3133_
N3103



L4432_PIED_D
E_COQ_N3152_
C535



L4432_PIED_D
E_COQ_N3158_
N3125



L4432_PIED_D
E_COQ_N3180_
_N3011